

IDONA®



parla*

Materials 2023

Parla Materials



We are a third generation furniture company that is continuing a legacy, that goes 113 years back.

We know why we shine bright;

We are talented.

We love craft.

We are tech oriented.

We work hard.

We move fast.

We are agile.

We are fully collaborative.

We thrive on problem solving.

We are a dedicated project partner.

We achieve the dreams of our project partners and we shine brighter together!



















Materials & Colours

Legend

Upholstery	2
Standard Fabrics & Leather Chart	
Category A	
Category B	
Category C	
Category D	
Category E	
Category L1	
Category L2	
Wood	36
Solid Wood	
Wood Veneer	
Metal	
Brass	39
Powder Coated Matte	
Coloured Steel	
Glass & Stone	39
Glass	
Marble	
Stone	
Outdoor	40
Solid Wood	
Powder Coated Textured	
Ropes	
Guide for Care & Maintenance	41

Legend

	Available for outdoor usage
	Genuine leather
	Waterproof
	Sustainable Fabric
	Wash at water temperature 30°C (80°F) or below
	Water temperature 60°C (140°F) or below
	Do not wash
	Do not tumble dry
	Tumble dry
	Dry clean
	Iron at low heat
	Iron at medium heat
	Wipe clean
	Do not bleach
	Bleach
	Available for FSC certified material

*Due to technical reasons and differences in monitors, it is not possible to guarantee the same tone between deliveries, colours of materials may also appear different to those shown on the catalogue.

Standard Fabrics & Leather Option

2023 Summary

Category	Fabric	Type	ECO Certificates	CAL 117	CRIB 5	FR
A	Athena	Fabric	-	Not applicable	Applied with extra cost	Applied with extra cost
A	Malta 02	Outdoor Fabric	Greenguard, GRS, 100% Recycled Fabric	Yes	Not applicable	Yes
A	Nona FR	Artificial Leather	-	Yes	Not applicable	Yes
A	Velluto*	Velvet	EU Eco Label	Yes	Applied with extra cost	Applied with extra cost
B	Aspect*	Fabric	OEKO-TEX	Not applicable	Applied with extra cost	Yes
B	Best FR	Artificial Leather	-	Yes	Not applicable	Yes
B	Magician*	Velvet	-	Yes	Applied with extra cost	Yes
B	New Sabine	Fabric	-	Not applicable	Applied with extra cost	Applied with extra cost
B	Nino	Fabric	-	Not applicable	Applied with extra cost	Applied with extra cost
B	Rizo*	Bouclet Fabric	-	Not applicable	Not applicable	Not applicable
B	Teddy	Bouclet Fabric	-	Yes	Not applicable	Yes
B	Winston*	Fabric	OEKO-TEX	Yes	Applied with extra cost	Yes
C	Bolt*	Fabric	OEKO-TEX	Yes	Applied with extra cost	Yes
C	P Heritage	Outdoor Fabric	-	Not applicable	Not applicable	Yes
C	Loft*	Fabric	OEKO-TEX	Yes	Applied with extra cost	Yes
C	Main Line Flax*	Fabric	EU Eco Label	Not applicable	Applied with extra cost	Yes
C	Vita*	Artificial Leather	-	Not applicable	Not applicable	Yes
D	S Heritage	Outdoor Fabric	Greenguard, OEKO-TEX, 50% Recycled Fabric	Not applicable	Not applicable	Yes
D	Patio*	Outdoor Fabric	Greenguard Gold, OEKO-TEX, EU Eco Label	Yes	Applied with extra cost	Yes
D	Remix 3*	Fabric	Greenguard Gold OEKO-TEX	Yes	Applied with extra cost	Yes
E	Hallingdal 65*	Fabric	Greenguard Gold, OEKO-TEX	Yes	Applied with extra cost	Yes
E	Steelcut Trio*	Fabric	Greenguard Gold, OEKO-TEX	Yes	Applied with extra cost	Yes
L1	Anatolia	Genuine Leather	-	Yes	Applied with extra cost	Yes
L1	Antik	Genuine Leather	-	Yes	Applied with extra cost	Yes
L1	Relax	Genuine Leather	-	Not applicable	Applied with extra cost	Yes
L2	Etna*	Genuine Leather	-	Yes	Applied with extra cost	Yes
L2	Fantasy*	Genuine Leather	-	Yes	Applied with extra cost	Yes
L2	Lena*	Genuine Leather	-	Yes	Applied with extra cost	Yes

*Delivery dates of these fabrics may vary according to your order specs and material stocks.
Please advise with your account manager before your orders.

Upholstery / Fabrics

Category A

Athena



Care / Cleaning



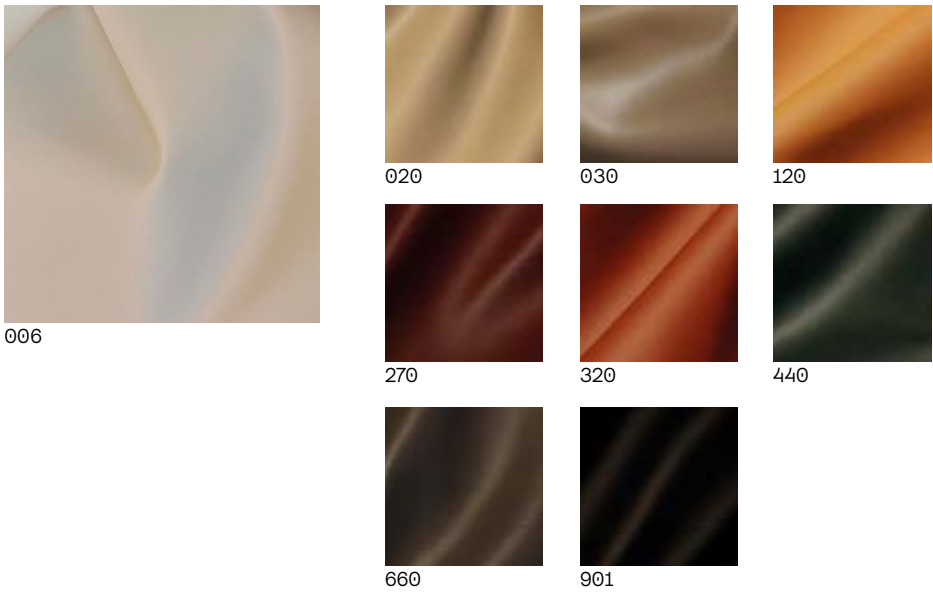
** Price will change according to the crib 5 application. Production time will be extended.

Material	%60 Polyester %40 Cotton
Width	Approximately 55 inches (140 cm (±2%))
Weight	ISO 2286-2 440 ± 20 gr
Durability	>40.000 ISO 12947-1
Pilling	
Light fastness	4/5 according to ISO 105-B02
Fastness to rubbing	Wet:5, Dry:5 (ISO 105 - X12)
Flammability	FR and CRIB 5 treatment applicable upon request with extra cost.**

Upholstery / Artificial Leather

Category A

Nona FR



Care / Cleaning



Material	78% Polyvinyl Chloride, 20 Polyester, 2% Vinyl Acrylic Laquer
Width	Approximately 55 inches (140 cm ±1)
Weight	Approximately 650 g/lin.m ±5%
Thickness	1,15 ± %5
Tensile Strenght	WARP >245N WEFT >400N
Tear Strenght	WARP >30N WEFT >25N
Durability	>100.000 rubs DIN 53863
Adhesion	40N
Light fastness	5/5 (ISO 105 - B02)
Fastness to rubbing	Grade 6 wet or dry
Water Resistance	Water Repellent
Flammability	BS 5852 Part 1 Cigarette & Match Test
	EN 1021-1 / 2 Cigarette & Match Test
	CAL 116, CAL 117
	NFPA 260,
	DIN 4102
	NFP 92 503 M3
	IMO FTP Code Annex 1 Part 8

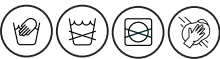
Upholstery / Fabrics

Category A

Velluto



Care / Cleaning



** Price will change according to the crib 5 application. Production time will be extended.

Material	%59 TEXTURED PES %41 PES
Width	140 cm +/- %2
Weight	425 gr / mt²
Durability	100.000 > Martindale
Light fastness	EN ISO 105-B02(Grade 6/8)
Fastness to rubbing	Wet: 4, Dry: 3/4 (ISO 105 - X12)
Flammability	BS 5852 Source 0
	BS 5852 Source 1
	EN 1021-1, EN 1021-2
	EN 1021-2 FR TREATED
	IMO PART 8, IMO PART 8 FR TESTED
	BS 7176 LOW HAZARD
	BS 7176 MEDIUM HAZARAD
	NFPA 260 PASS, CAL TB 117 - PASS
	NF P 92 5XX M1-M2-M3
	DIN 4102 B1-B2
	ECER 11803
	CRIB 5**
Additional Tests	Antibacterial ASTM E 2149-13, Antiviral ISO 18184
	Sprey Test EN ISO 4920, AATCC193 , AATC 118
Airflow	ISO 9237
Sustainability	EU Eco Label, Certified to OEKO-TEX® Standard 100

Upholstery / Fabrics

Category B

Aspect



Care / Cleaning



** Price will change according to the crib 5 application. Production time will be extended.

Material	75% Trevira® CS Flame Retardant Polyester, 25% Polyester (Non metallic dye stuffs)
Width	Approximately 55 inches (140 cm)
Weight	Approximately 325 g/m2 (455 g/lin.m ±5%)
Durability	≥50,000 Martindale cycles
Light fastness	5 (ISO 105 - B02)
Fastness to rubbing	Wet: 4, Dry: 4 (ISO 105 - X12)
Flammability	CRIB 5**
	EN 1021 - 1 (cigarette)
	EN 1021 - 2 (match)
	BS 7176 low hazard
	BS 5852 ignition source 5 (over CMHR 50kg/m3 foam)
	BS 7176 medium hazard (over CMHR 50kg/m3 foam)
	DIN 4102 B1
	NF D 60-013 (over CMHR 50kg/m3 foam)
	ÖNORM B 3825 & A 3800-1 (over CMHR 58kg/m3 foam)
	UNI 9175 Classe 1 IM
Sustainability	Certified to OEKO-TEX® Standard 100

Upholstery / Artificial Leather

Category B

Best FR



Care / Cleaning



Material	100% Polyurethane
Width	Approximately 55 inches (140 cm ±3)
Weight	Approximately 550 g/lin.m ±10%
Thickness	1,3 ± 0,15
Tensile Strenght	WARP >568N WEFT >620N
Tear Strenght	WARP >63N WEFT >61N
Durability	>500.000 rubs ISO 5470-2
Light fastness	7 (ISO 105 - B02)
Fastness to rubbing	Grade 5 wet or dry
Water Resistance	Water Repellent
Flammability	BS 5852 Part 1 Cigarette & Match Test
	EN 1021-1 / 2 Cigarette & Match Test
	CA Tecxh Bull 117 NFPA 260 Cigarette Test

Upholstery / Fabrics

Category B

Magician



Care / Cleaning



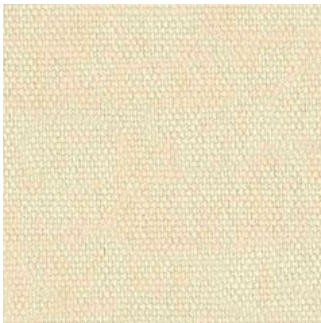
** Price will change according to the crib 5 application. Production time will be extended.

Material	100% Polyester
Width	Approximately 57.48 inches (146 cm)
Weight	Approximately 317 g/m²
Durability	85.000 Martindale
Pilling	Yarn1: 9 Yarn2: 19
Flammability	BS 5852
	CAL 117
	FMVSS 302
	NFPA 260
	CRIB 5**
Colouring type	Piece dyed
Type of print/dye - disperse:	Yes
Waterproof	Yes
After treatment	- brushed/emerised: Yes
	- other specification: T/C backing

Upholstery / Fabrics

Category B

New Sabine



Ivory



Sand



Beige Red



Tan



Green Grey

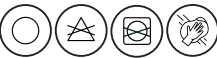


Cement Grey



Anthrasit

Care / Cleaning



** Price will change according to the crib 5 application. Production time will be extended.

Material	100% PES
Width	Approximately 55 inches (137 cm (±2%))
Weight	Approximately 300 g/m2 (±10%)
Durability	40.000 Martindale
Pilling	4-5 ISO 12945-2:2001
Light Fastness	5 ISO 105-X12:2002
Resistance to	WEFT 0-1 / WARP 1-2
Seam Slippage	
Tear Strenght	WEFT 154 N / WARP 190 N
Waterproof	Available
Flammability	Treatments can be applied with extra cost. Production time will be extended.**

Upholstery / Fabrics

Category B

Nino



17-135



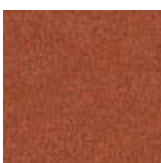
18-17



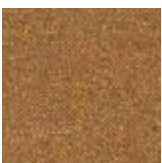
52-27



72-72

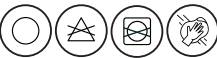


87-87



143-87

Care / Cleaning



** Price will change according to the crib 5 application. Production time will be extended.

Material	100% PES
Width	Approximately 55 inches (140 cm (±2%))
Weight	Approximately 469 g/m2 (±10%)
Durability	70.000 Martindale
Pilling	4-5 ISO 12945-2:2000
Light Fastness	4-5 ISO 105-X12:2001
Resistance to	WEFT 0-1 / WARP 1-2
Seam Slippage	
Tear Strenght	WEFT 154 N / WARP 190 N
Waterproof	Treatment optional.
Flammability	Treatments can be applied with extra cost. Production time will be extended.**

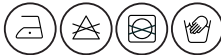
Upholstery / Fabrics

Category B

Rizo



Care / Cleaning



Material	% 100 PES
Width	142 cm (+/- %3)
Weight	390 g/ mt2
Durability	50.000 > Martindale
Fastness to rubbing	Grade 4 or 5
Flammability	Treatments can be applied with extra cost. Production time will be extended.

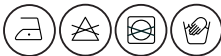
Upholstery / Fabrics

Category B

Teddy



Care / Cleaning



Material	% 59 Acrylic - % 41 Pes
Width	140 cm +/- %2
Weight	785 gr mt² +/- %5
Durability	40.000 > Martindale
Flammability	BS 5852 Source 0
	EN 1021-1
	NFPA 260
	CAL TB 117 - PASS
	** Treatments can be applied with extra cost. Production time will be extended.

Upholstery / Fabrics

Category B

Winston



04 Shadow



08 Putty



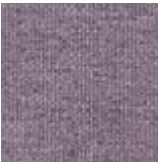
16 Jute



20 Marine



21 Indigo



25 Wisteria



30 Canyon



32 Pineapple



35 Chive

Care / Cleaning



** Price will change according to the crib 5 application. Production time will be extended.

Material	100% Polyester
Width	Approximately 57.5 inches (146 cm)
Weight	Approximately 327 g/m²
Durability	100.000 Martindale
Pilling	Yarn1: 93 Yarn2: 75
Flammability	BS 5852
	CAL 117
	FMVSS 302
	NFPA 260
	CRIB 5**
	Piece dyed
Colouring type	- disperse: Yes
Type of print/dye	- brushed/emerised: Yes
After treatment	(double rubs): 200.000
Wyzenbeek	cotton duck type heavy upholstery: Yes
Sustainability	Oeko-Tex, ISO 14001

Upholstery / Fabrics

Category C

Bolt



16 Silver



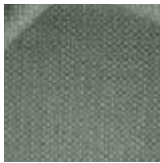
20 Aluminium



22 Jet



23 Ink



27 Turquoise



30 Emerald



32 Leaf



37 Canyon



38 Chili

Care / Cleaning



** Price will change according to the crib 5 application. Production time will be extended.

Material	Jacquard Weave, 60% Polyester, 40% Polypropylene, 100% filament
Width	Usable widht 142.00 cm
Weight	Approximately 342 g/m3
Repeat	Plain
Durability	100.000 Martindale
Pilling	Grade 4
Light Fastness	Grade 4
Fastness to	Grade 5
Water	
Fastness to Wear	Grade 4
Tensile Strenght	Tensile strength weft in N/5cm 1200
	Tensile strength warp in N/5cm 1400
Tearing Strenght	WARP 150 D WEFT 150 N
Elongation	WARP 29,5% WEFT 30,5%
Fastness to	4-5 dry or wet
Rubbing	
Flammability	FMVSS 302 Pass, BS5852 source 1 comment
	BS5852 source 0, CAL 117 Complies
	NFPA 260, CRIB 5**
Colouring Type	Yarn dyed
Sustainability	OEKO-TEX, ISO 14001
Wyzenbeek	(double rubs): 48.000
Treatment	Mildew Resistant, Stain-Free Technology, Anti bacterial - microbial, Odour Resistant

Upholstery / Artificial Leather

Category C

Loft



Care / Cleaning



** Price will change according to the crib 5 application. Production time will be extended.

Material	Flat Weave 100% Polyester 67% filament, 33% staple
Width	Usable width 142.00 cm
Weight	Approximately 320 g/m2
Repeat	Plain
Durability	30.000 Martindale
Pilling	Grade 4
Light Fastness	Grade 5
Fastness to	Grade 4-5
Water	
Fastness to Wear	Grade 4
Tensile Strenght	Tensile strength weft in N/5cm 170
	Tensile strength warp in N/5cm 740
Tearing Strenght	WARP 56 D WEFT 120 N
Elongation	WARP 17% WEFT 9%
Fastness to	4-5 dry or wet
Rubbing	
Flammability	BS5852 source 0, BS5852 source 1
	CAL 117 Complies, NFPA 260
	FMVSS 302, CRIB 5**
Colouring Type	Piece dyed
Sustainability	OEKO-TEX, ISO 14001
Absorption	Water Repellent
Wyzenbeek	(double rubs): 40.000
Treatment	Mildew Resistant, Stain-Free Technology, Anti bacterial - microbial, Odour Resistant

Upholstery / Fabrics

Category C

Main Line Flax



Care / Cleaning



** Price will change according to the crib 5 application. Production time will be extended.

Material	70% Virgin Wool, 30% Flax
Width	Approximately 55 inches (140 cm)
Weight	Approximately 437 g/m2 (612 g/lin.m ±5%)
Durability	≥50,000 Martindale cycles
Light fastness	5 (ISO 105 - B02)
Fastness to	Wet: 3, Dry: 4 (ISO 105 - X12)
rubbing	
Flammability	BS 5852 ignition source 5 (CRIB 5)
	EN 1021-1&2 cigarette & match
	BS 7176 low hazard
	BS 7176 medium hazard
	NF D 60-013
	ÖNORM B 3825 & A 3800-1 (58kg/m3
	CMHR Foam)
	UNI 9175 Classe 1 IM
	BS 5867-2: Type B curtains & drapes
	CRIB 5**
Sustainability	Certified to the EU Ecolabel
	Certified to Indoor Advantage™ “Gold”
	Rapidly renewable and compostable
	Made from wool and bast fibre

Upholstery / Artificial Leather

Category C

Vita



Care / Cleaning

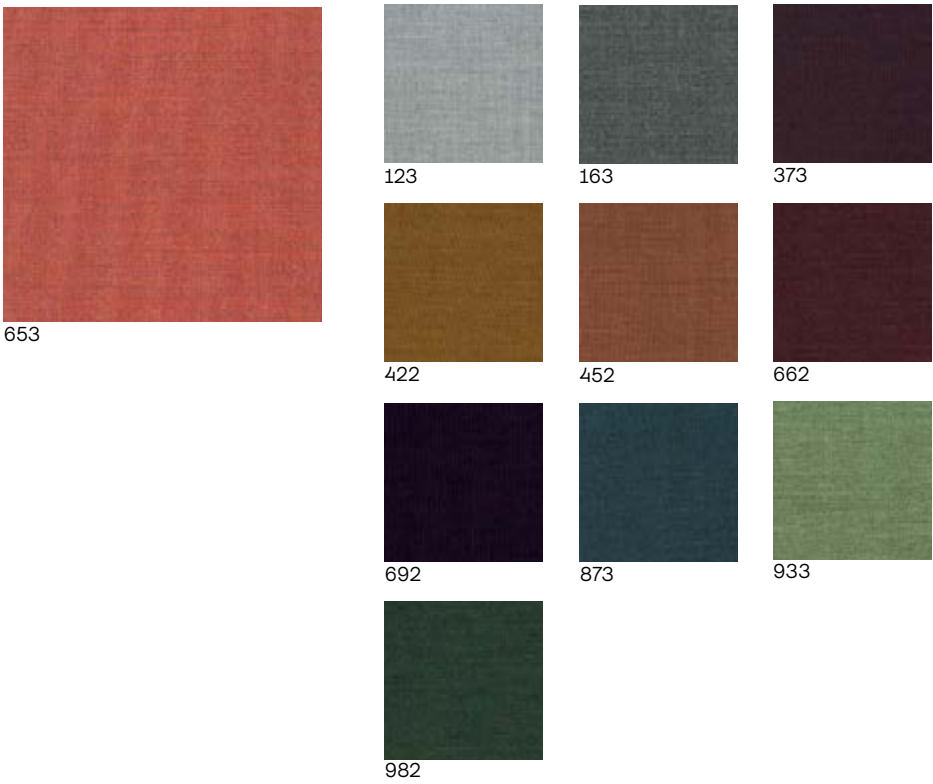


Material	Surface: 98% PVC, 2%. PU Substrate: 100% Cotton
Width	Approximately 55 inches (140 cm)
Weight	Approximately 1190 g/lin.m ±10%
Durability	ISO 5470-2 100,000 rubs (Grade 2 min.)
Light fastness	6 (ISO 105 - B02)
Fastness to rubbing	Wet: 4, Dry: 4 (ISO 105 - X12)
Flammability	EN 1021-1 (cigarette), EN 1021-2 (match) BS 7176 low hazard BS 5852 ignition source 5 (CRIB 5) BS 7176 medium hazard BS 5852 ignition source 7 (with interliner) UNI 9175 Classe 1 IM
Flexes	ISO 7854 Method B 400,000 Flexing cycles
Waterproof	Hydrostatic head BS 3424 Part 26 > 1 mt
Bleach cleanable	ISO 105 E03 colour change 4 for 10% chlorine solution
Urea resistance	BS 3424 Part 19 no significant deterioration after 24 hrs
Anti-microbial /	AATCC 147
Anti-fungal	
Phthalate free	EN 15777
Residual extension	ISO 14704-1 Method A < 3% After 30 minutes

Upholstery / Fabrics

Category D

Remix 3



Care / Cleaning



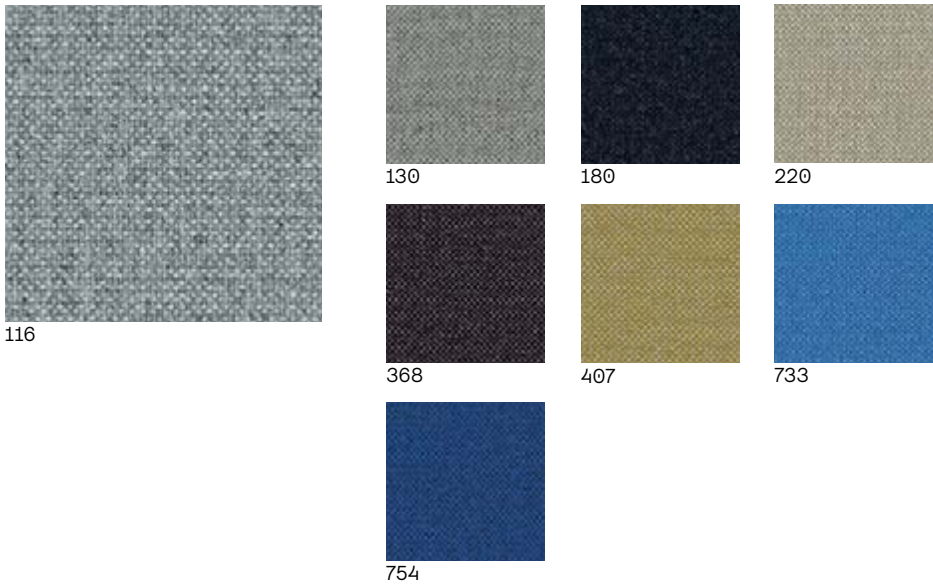
** Price will change according to the crib 5 application. Production time will be extended.

Material	90% New wool (worsted), 10% Nylon
Width	Approximately 55 inches (140 cm)
Weight	Approximately 420 g/lin.m
Durability	≥100,000 Martindale cycles (EN ISO 12947)
Pilling	4 (EN ISO 12945)
Light fastness	5-7 (ISO 105 - B02)
Fastness to rubbing	Wet: 4-5, Dry: 4-5 (ISO 105 - X12)
Flammability	BS 5852 Crib 5 with treatment ** AS/NZS 1530.3, AS/NZS 3837 class 2 BS 5852 ignition source 3, BS 5852 part 1 EN 1021-1/2 GB 50222 B1 with treatment IMO FTP Code 2010:Part 7 with treatment IMO FTP Code 2010:Part 8 NF D 60 013, NFPA 260 SN 198 898 5.3 with treatment , UNI 9175 1IM US Cal. Bull. 117-2013, ÔNORM B1/Q1, CRIB 5**
Sustainability	Complies with EU ecolabel “The Flower”
Absorption	0.55/Class D (flat), 0.80/Class B (waved) EN ISO 354
Airflow	465 Pa s/m EN 29053

Upholstery / Fabrics

Category E

Hallingdal 65



Care / Cleaning



* To pass this test flame retardant treatment is necessary. we are looking into more environmental friendly alternatives but for now the external finisher may use a treatment containing halogen based flame retardants.

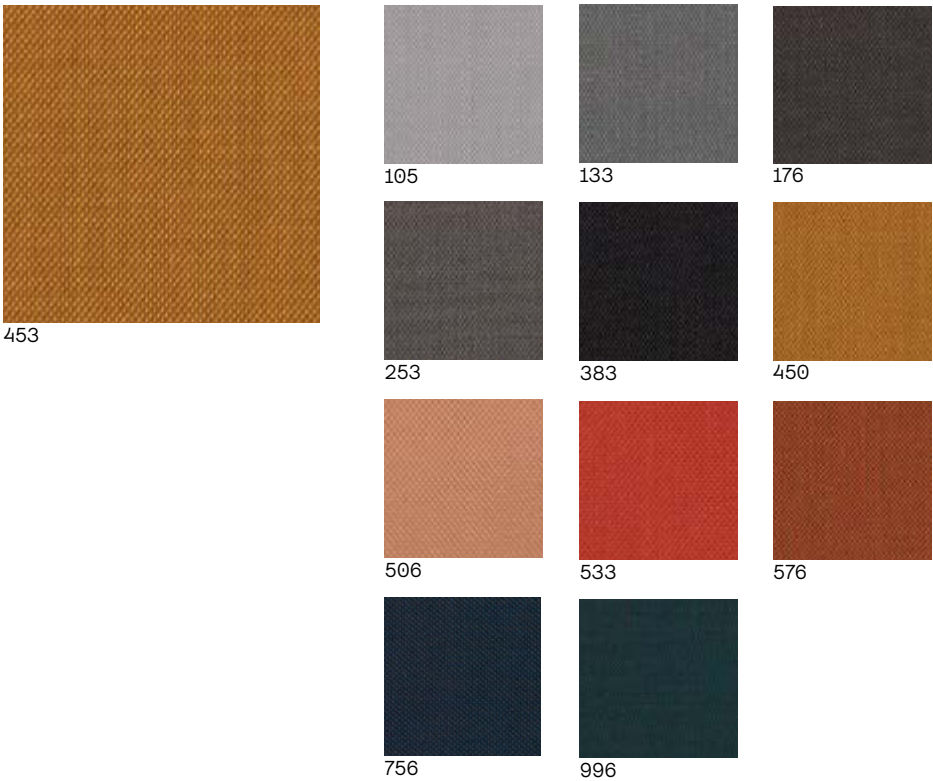
** Price will change according to the crib 5 application. Production time will be extended.

Material	70% New wool, 30% Viscose
Width	Approximately 51 inches (130 cm)Approximately 795 g/lin.m
Weight	≥100,000 Martindale cycles EN ISO 12947
Durability	3-4 (EN ISO 12945)
Pilling	5-7 (ISO 105 - B02)
Light fastness	Wet: 3-5, Dry: 4-5 (ISO 105 - X12)
Fastness to rubbing	
Flammability	BS 5852 CRIB 5
	AS/NZS 1530.3
	AS/NZS 3837 class 2
	BS 5852 ignition source 3
	BS 5852 Part 1
	EN 1021-1/2
	GB 50222 B1 with treatment *
	IMO FTP Code 2010:Part 8
	NF D 60 013
	NFPA 260, CRIB 5**
	SN 198 898 5.3 with treatment *, UNI 9175 1IM
	US Cal. Bull. 117-2013, ÖNORM B1/Q1
Sustainability	Complies with EU ecolabel “The Flower”
Absorption	0.45/Class D (flat), 0.70/Class C (waved) EN ISO 354
Airflow	182 Pa s/m EN 29053

Upholstery / Fabrics

Category E

Steelcut Trio



Care / Cleaning



* To pass this test flame retardant treatment is necessary. we are looking into more environmental friendly alternatives but for now the external finisher may use a treatment containing halogen based flame retardants.

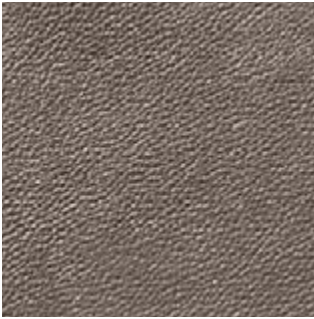
** Price will change according to the crib 5 application. Production time will be extended.

Material	90% New wool (worsted), 10% Nylon
Width	Approximately 55 inches (140 cm)
Weight	Approximately 770 g/lin.m
Durability	≥100,000 Martindale cycles EN ISO 12947
Pilling	4 (EN ISO 12945)
Light fastness	5 (ISO 105 - B02)
Fastness to rubbing	Wet: 4-5, Dry: 4-5 (ISO 105 - X12)
Flammability	BS 5852 Crib 5 with treatment**
	AS/NZS 1530.3, AS/NZS 3837 class 2
	BS 5852 ignition source 3, BS 5852 part 1
	EN 1021-1/2
	GB 50222 B1 with treatment
	IMO FTP Code 2010:Part 8
	NF D 60 013, NFPA 260
	SN 198 898 5.3 with treatment , UNI 9175 1IM
	US Cal. Bull. 117-2013, ÖNORM B1/Q1
Sustainability	Complies with EU ecolabel “The Flower”
Absorption	0.70/Class C (flat), 0.95/Class A (waved) EN ISO 354
Airflow	910 Pa s/m EN 29053

Upholstery / Genuine Leather

Category L1

Anatolia



126 Inci



666 Bretz



715 Perla Indium Grey

Care / Cleaning



** Price will change according to the crib 5 application. Production time will be extended.

Material	Various
Finish	Water-Based Pigmented
Thicknes	1.1 - 1.3mm
Weight	
Average size	
Colour fastness	DRY UNI EN ISO 11640 DRY @200 CYCLE
to rubbing	≥ 4 GREY SCALA P
	WET UNI EN ISO 11640 WET @50CYCLE
	≥ 4 GREY SCALA P
Light resistance	ISO 105 B02 ≥ 4
Flammability	BS 5852: PART 1: 1979
	CAL 117, CRIB 5**
Adhesion	UNI EN ISO 11664 ≥ 3 N / cm
Flexes	TS EN ISO 32100 ≥ 20.000
Tear Strength	BS EN ISO 3377-1 ≥ 25 N
Tensile Strenght	BS EN ISO 3376 ≥ 10 N / mm

Upholstery / Genuine Leather

Category L1

Antik



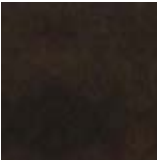
IWC Taş



IWC Siyah



IWC Electra Kızıl



Rondo Yosun



Rondo Kahve

Care / Cleaning



** Price will change according to the crib 5 application. Production time will be extended.

Material	European Cowhide
Finish	Full Aniline
Thicknes	1.1 - 1.3mm
Weight	0.85- 0.95kg/sqm
Average size	4.3sqm
Colour fastness	DRY UNI EN ISO 11640 DRY @200 CYCLE
to rubbing	≥ 4 GREY SCALA P
	WET UNI EN ISO 11640 WET @50CYCLE
	≥ 4 GREY SCALA P
Light resistance	ISO 105 B02 ≥ 4
Flammability	BS 5852: PART 1: 1979, CRIB 5**
	CAL 117
Adhesion	UNI EN ISO 11664 ≥ 3 N / cm
Flexes	TS EN ISO 32100 ≥ 20.000
Tear Strength	BS EN ISO 3377-1 ≥ 25 N
Tensile Strenght	BS EN ISO 3376 ≥ 10 N / mm
Wellness	Gold Rated by LWG
Application	Hospitality, Residential, Contract

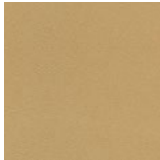
Upholstery / Genuine Leather

Category L1

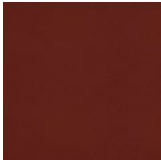
Relax



231 VIP Krem



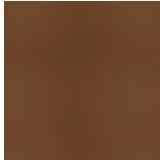
239 Krem



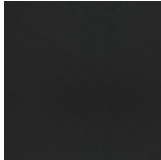
380 Kırmızı



625 Camel



626 Açık Kahve



953 Siyah

Care / Cleaning



*Hide size may vary according to selected colour.

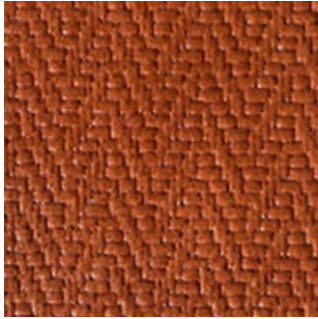
** Price will change according to the crib 5 application. Production time will be extended.

Material	European Cowhide
Finish	Full Pigmented
Thicknes	1.1 - 1.3mm
Weight	0.85- 0.95kg/sqm
Average size	4.2 sqm*
Colour fastness	UNI EN ISO 11640 DRY @1500 CYCLE
to rubbing	≥ 4 GREY SCALA
	UNI EN ISO 11640 WET @500 CYCLE
	≥ 4 GREY SCALA
Light resistance	ISO 105 B02 ≥ 5
Flammability	ECR 118.03, ANEX 6 7 8
	CRIB 5**
Adhesion	UNI EN ISO 11664 ≥ 5 N / cm
Flexes	TS EN ISO 32100 ≥ 100.000
Tear Strength	BS EN ISO 3377-1 ≥ 25 N
Tensile Strenght	BS EN ISO 3376 ≥ 12 N / mm
Wellness	Gold Rated by LWG
Application	Hospitality, Automotive, Aircraft, Yacht, Railway

Upholstery / Genuine Leather

Category L2

Fantasy



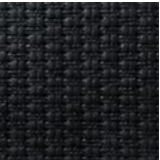
613 Carpet Tobacco



IWC Rug
Chestnut



IWC Stone
Lil Lizard



IWC Chain Black

Care / Cleaning



*Hide size may vary according to selected colour.

** Price will change according to the crib 5 application. Production time will be extended.

Material	Bovine leather
Thicknes	Approximately 0,9 mm
Average size	4,50 m2*
Colour fastness	IUF 450 / UNI EN ISO 11640 - 500 dry rubs (Grade 4 min.)
to rubbing	IUF 450 / UNI EN ISO 11640 - 100 wet rubs (Grade 4 min.)
	IUF 450 / UNI EN ISO 11640 - 50 alkaline ph8 (Grade 4 min.)
Light resistance	5 blue scale - IUF 402 UNI EN ISO 105-B02
Flammability	CRIB 5 **
	UNI EN ISO 1021-1/2
	BS 5852 1990 Sec. 4 NI/0-1
	California T.B. 117
Flexes	IUP 20 / UNI EN ISO 5402 (Grade 30.000 minimum)
Adhesion	IUF 470 / UNI EN ISO 11644 (Grade 3,50 N/cm min.)
Tear Strength	IUF 40 / UNI EN ISO 3377-1 (Grade 20 N min.)

Upholstery / Genuine Leather

Category L2

Etna



16142



16196



16116



16140

Care / Cleaning



*Hide size may vary according to selected colour.

** Price will change according to the crib 5 application. Production time will be extended.

Material	Bovine leather
Thicknes	Approximately 0,9 mm
Average size	4,50 m2*
Colour fastness to rubbing	IUF 450 / UNI EN ISO 11640 - 500 dry rubs (Grade 4 min.) IUF 450 / UNI EN ISO 11640 - 100 wet rubs (Grade 4 min.) IUF 450 / UNI EN ISO 11640 - 50 alkaline ph8 (Grade 4 min.)
Light resistance	5 blue scale - IUF 402 UNI EN ISO 105-B02
Flammability	CRIB 5 ** UNI EN ISO 1021-1/2 BS 5852 1990 Sec. 4 NI/0-1 California T.B. 117
Flexes	IUP 20 / UNI EN ISO 5402 (Grade 30.000 minimum)
Adhesion	IUF 470 / UNI EN ISO 11644 (Grade 3,50 N/cm min.)
Tear Strength	IUF 40 / UNI EN ISO 3377-1 (Grade 20 N min.)

Upholstery / Genuine Leather

Category L2

Lena



443



665



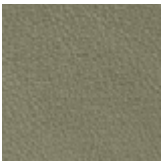
2266



2270



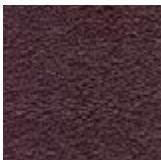
2535



3360



3396



5458



5484



Black

Care / Cleaning



*Hide size may vary according to selected colour.

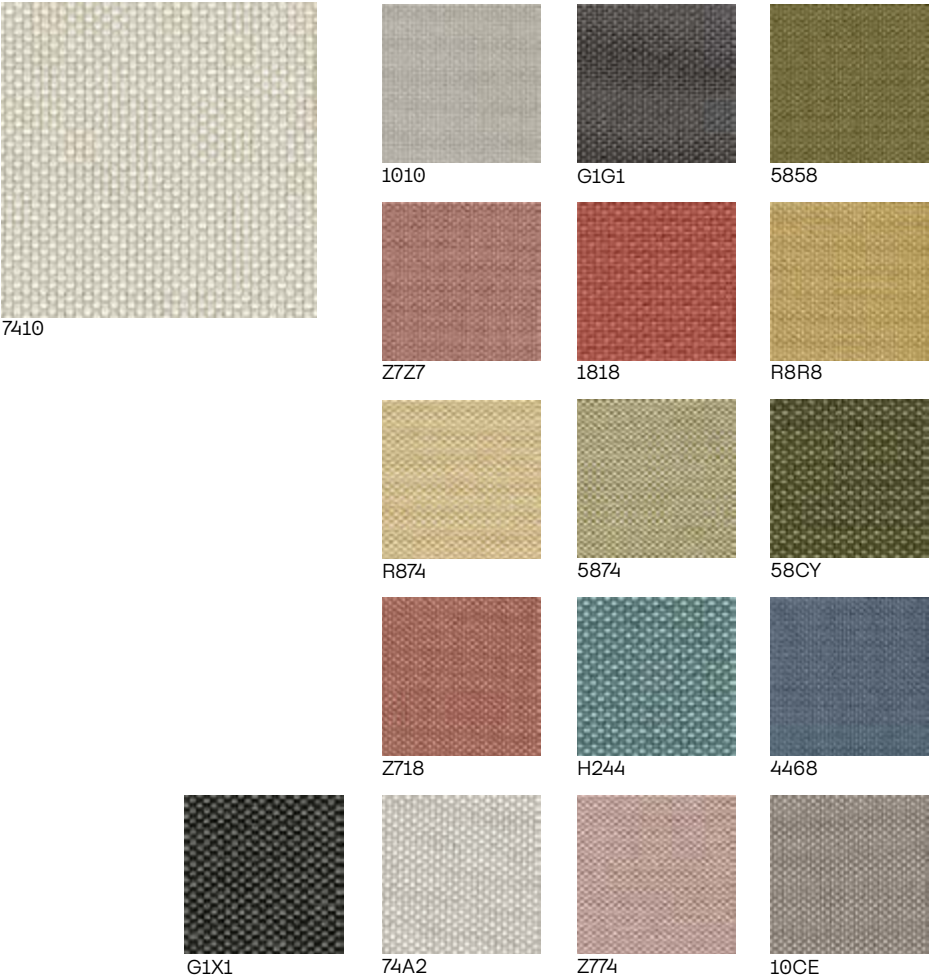
** Price will change according to the crib 5 application. Production time will be extended.

Material	Bovine leather
Thicknes	Approximately 0,9 mm
Average size	4,20 m2*
Colour fastness to rubbing	IUF 450 / UNI EN ISO 11640 - 500 dry rubs (Grade 4 min.) IUF 450 / UNI EN ISO 11640 - 150 wet rubs (Grade 4 min.) IUF 450 / UNI EN ISO 11640 - 80 alkaline ph8 (Grade 4 min.)
Light resistance	5 blue scale - IUF 402 UNI EN ISO 105-B02
Flammability	CRIB 5 ** UNI EN ISO 1021-1/2 BS 5852 1990 Sec. 4 NI/0-1 California T.B. 117
Flexes	IUP 20 / UNI EN ISO 5402 (Grade 30.000 minimum)
Adhesion	IUF 470 / UNI EN ISO 11644 (Grade 3,50 N/cm min.)
Tear Strength	IUF 40 / UNI EN ISO 3377-1 (Grade 20 N min.)

Upholstery / Outdoor Fabrics

Category A

Malta 02



Care / Cleaning



Material	%100 ROLEFIN
Width	Approximately 55 inches (140 cm)
Weight	Approximately 284 g/lin.m
Durability	≥50,000 Martindale cycles (EN ISO 12947)
Wyzenbeek	70000
Pilling	5 (EN ISO 12945)
Light fastness	7 (ISO 105 - B04)
Tensile Strenght	WARP 1420WEFT 942 EN ISO 13934-1
Tear Strenght	WARP 180 WEFT 111 EN ISO 13937-3
Fastn. to rubbing	Wet: 4 Dry: 5 (ISO 105-X12)
Repellence	
... to liquids	AATCC 193 - 8
... to oil	AATCC 118 - 4
... to phenolic	EN ISO 105 - X18 4/5
yellowing	
Flammability	BS 5852 PART 1 SOURCE 0
	EN 1021-1, CALL 117
	NFPA 260
Spray test	EN ISO 4920 - 80
Sustainability	GRS (Version 4) ,100% Recycled, ISO 14001
	OEKO_ TEX, MED Module D, Registered AS 91000

Upholstery / Outdoor Fabrics

Category C

P Heritage - Classe



Care / Cleaning



Material	%100 Solution Dyed Outdoor PES
Width	165 cm (+/-3%)
Weight	264 gr/m2
Repeat	Plain
Durability	Martindale 40000 rubs
Light fastness	7+ (ISO 105 B04)
Colour Fastness	
... to sea water	4-5 (ISO 105-E02)
... to chlorine	4-5 (ISO 105-E02)
water	
UV Test	5 (Scale 1-5 ISO 4892-3)
Flammability	BS 5852 Source 0
	NFPA701 Class 1
Applications	Water and Stain Repellant : Mildew Resistant

Upholstery / Outdoor Fabrics

Category C

P Heritage - Maida



Maida Summer

Care / Cleaning

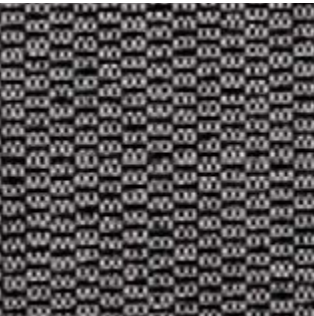


Material	%100 Solution Dyed Outdoor PES
Width	165 cm (+/-3%)
Weight	264 gr/m2
Repeat	Plain
Durability	Martindale 40000 rubs
Light fastness	7+ (ISO 105 B04)
Colour Fastness	
... to sea water	4-5 (ISO 105-E02)
... to chlorine	4-5 (ISO 105-E02)
water	
UV Test	5 (Scale 1-5 ISO 4892-3)
Flammability	BS 5852 Source 0
	NFPA701 Class 1
Applications	Water and Stain Repellant : Mildew Resistant

Upholstery / Outdoor Fabrics

Category C

P Heritage - Manso



Manso Anthracite



Manso Aurora



Manso Cyrilla



Manso Gold Finch



Manso Olive



Manso Navy

Care / Cleaning



Material	%100 Solution Dyed Outdoor PES
Width	165 cm (+/-3%)
Weight	327 gr/m2
Repeat	Plain
Durability	Martindale 30000 rubs
Light fastness	7+ (ISO 105 B04)
Colour Fastness	
... to sea water	4-5 (ISO 105-E02)
... to chlorine	4-5 (ISO 105-E02)
water	
UV Test	4 (Scale 1-5 ISO 4892-3)
Flammability	BS 5852 Source 0
	NFPA701 Class 1
Applications	Water and Stain Repellant : Mildew Resistant

Upholstery / Outdoor Fabrics

Category C

P Heritage - Omegna



Omegna Natural



Omegna Anthracite



Omegna Royal

Care / Cleaning

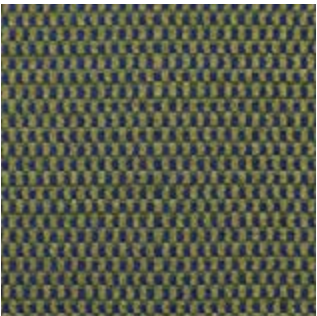


Material	%100 Solution Dyed Outdoor PES
Width	165 cm (+/-3%)
Weight	361 gr/m2
Repeat	Plain
Durability	Martindale 300000 rubs
Light fastness	7+ (ISO 105 B04)
Colour Fastness	
... to sea water	4-5 (ISO 105-E02)
... to chlorine	4-5 (ISO 105-E02)
water	
UV Test	5 (Scale 1-5 ISO 4892-3)
Flammability	BS 5852 Source 0
	NFPA701 Class 1
Applications	Water and Stain Repellant : Mildew Resistant

Upholstery / Outdoor Fabrics

Category C

P Heritage - Rhemes



Rhemes Aurora



Rhemes Rock



Rhemes Summer

Care / Cleaning



Material	%100 Solution Dyed Outdoor PES
Width	165 cm (+/-3%)
Weight	264 gr/m2
Repeat	H:0,4 cm - V:0,4 cm
Durability	Martindale 400000 rubs
Light fastness	7+ (ISO 105 B04)
Colour Fastness	
... to sea water	4-5 (ISO 105-E02)
... to chlorine	4-5 (ISO 105-E02)
water	
UV Test	5 (Scale 1-5 ISO 4892-3)
Flammability	BS 5852 Source 0
	NFPA701 Class 1
Applications	Water and Stain Repellant : Mildew Resistant

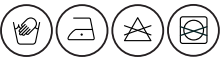
Upholstery / Outdoor Fabrics

Category D

S Heritage



Care / Cleaning



Material	50% recycled 47% Sunbrella® Acrylic 3% Polyester
Finish	Water-Repellent & Stain-Proof, Déperlant & Anti-Taches
Width	EN 1773 Min. Useful widtht 137 cm
Weight	ISO 3801 g/m² 335
Durability	≥50,000 Martindale cycles (EN ISO 12947)
Wyzenbeek	70000
Pilling	5 (EN ISO 12945)
Light fastness	ISO 105B02 Class / 8 - 8 UV INDOOR
Tensile Strenght	WARP 1420WEFT 942 EN ISO 13934-1
Tear Strenght	WARP 180 WEFT 111 EN ISO 13937-3
Fastness to rubbing	Wet: 4 Dry: 5 (ISO 105-X12)
Wash Colour	ISO 105C06 Class / 5 - 5
Fastness	
Colour fastness	
... to weathering	ISO 105B04 - 1000 H Class / 5 - 4-5 OUTDOOR
... to friction	Wet: ISO 105X12 Class / 5 - 5, Dry: ISO 105X12 Class / 5 - 5
Spray test	ISO 4920, Class / 5, 5
Sustainability	Greeguard, 50% Recycled, Reach Regulation, QSEE Certification, OEKO-TEX Label, Zero Landfill

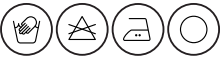
Upholstery / Outdoor Fabrics

Category D

Patio



Care / Cleaning



** Price will change according to the crib 5 application. Production time will be extended.

Material	100% Trevira CS
Width	Approximately 55 inches (140 cm)
Weight	Approximately 560 g/lin.m
Durability	≥50,000 Martindale cycles (EN ISO 12947)
Pilling	4-5 (EN ISO 12945)
Light fastness	5 (ISO 105 - B02)
Fastness to rubbing	Wet: 4-5, Dry: 4-5 (ISO 105-X12)
Colour fastness	
... to light	7 (ISO 105-B02)
... to weathering	6-7 (ISO 105-B04)
... to chlorine	4-5 (ISO 105-E03)
water	
... to sea water	4-5 (ISO 105-E02)
Flammability	BS 5852 ignition source 5 (CRIB 5), BS 5852 part 1 ignition source 0, DIN 4102 B1, EN 1021-1/2, IMO FTP Code 2010 Part 8, NF D 60 013 / NF P 92 507 M1, UNI 9175 1IM, US Cal. Bull. 117-2013, ÖNORM B1/Q1, CRIB 5**
Sustainability	Greeguard Gold, EN 15804, ISO 14040, HPD
Spray test	Fluorocarbon-free water repellent finish, Note 3 (EN 4920)
Soil repellent	Note min. 4, depending on colour

Solid Wood

Ash



With a **neutral colorbase**, ash trees are very durable and robust. Ash also has better resistance to sunlight and its possible corruptive effects.

***Please preview stain colours from our official website or 2023 Collection catalogue. Stain colours will show hue differences according to screen types of display or printing materials. It is not advised to use screenshots or images for stain colour confirmations and approvals must be made with the actual wood samples.**

***Starting from 2032 all standard parla collection varnishes are non- toxic and water based with 10% gloss finish.**

Solid Wood

Beech



Parla Collection products are generally produced using Beech wood.

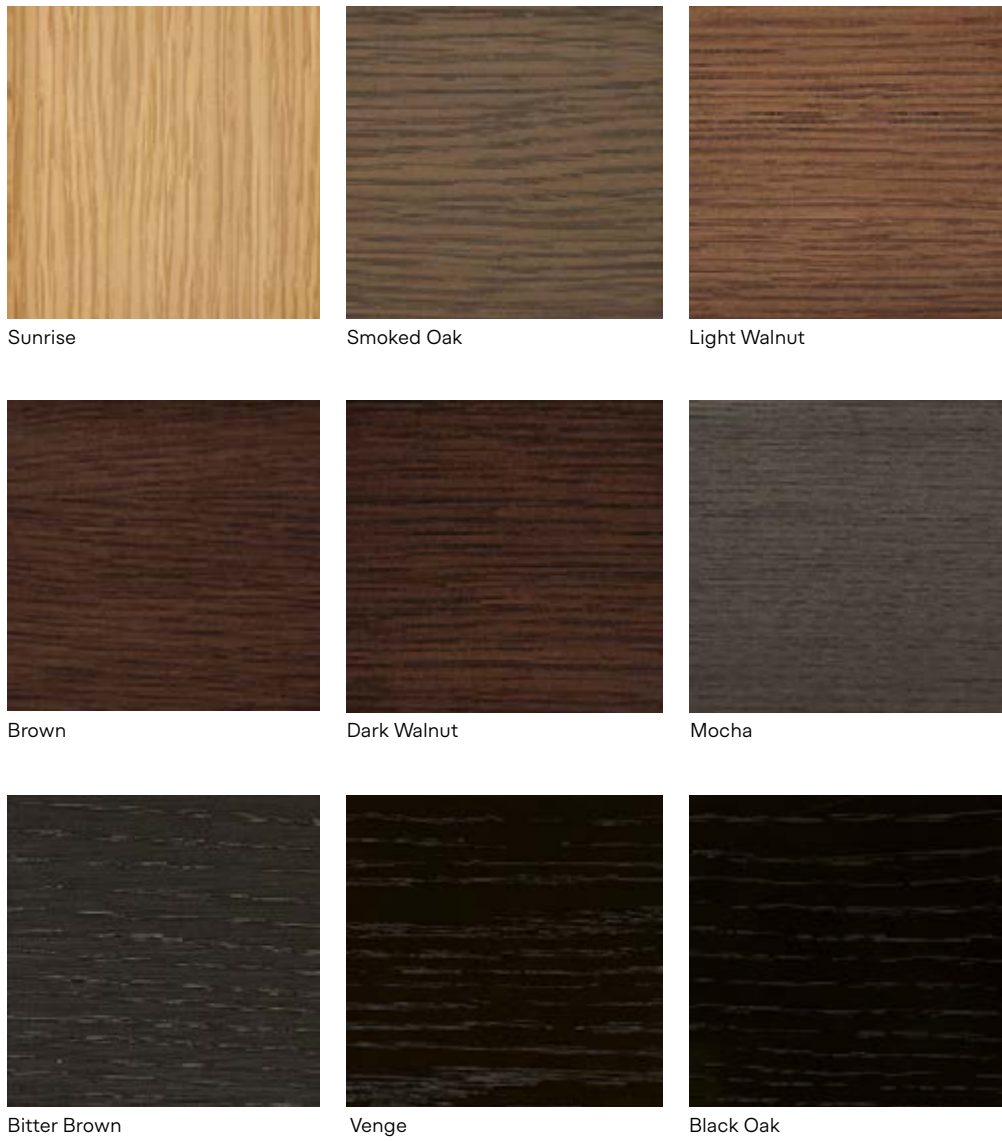
Having a **light-pink undertone**, beech wood is very easy to form, therefore easy to use for curved shapes and round corners requiring further surface processing.

***Please preview stain colours from our official website or 2023 Collection catalogue. Stain colours will show hue differences according to screen types of display or printing materials. It is not advised to use screenshots or images for stain colour confirmations and approvals must be made with the actual wood samples.**

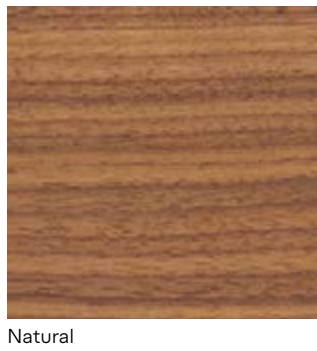
***Starting from 2032 all standard parla collection varnishes are non- toxic and water based with 10% gloss finish.**

Wood Veneer

Oak



American Walnut

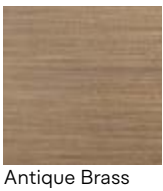


*Please preview stain colours from our official website or 2023 Collection catalogue. **Stain colours will show hue differences according to screen types of display or printing materials. It is not advised to use screenshots or images** for stain colour confirmations and approvals must be made with the actual wood samples.

* We use quarter cut veneer sheets with slip matching on plywood as our standard for wood veneer options.

Metal

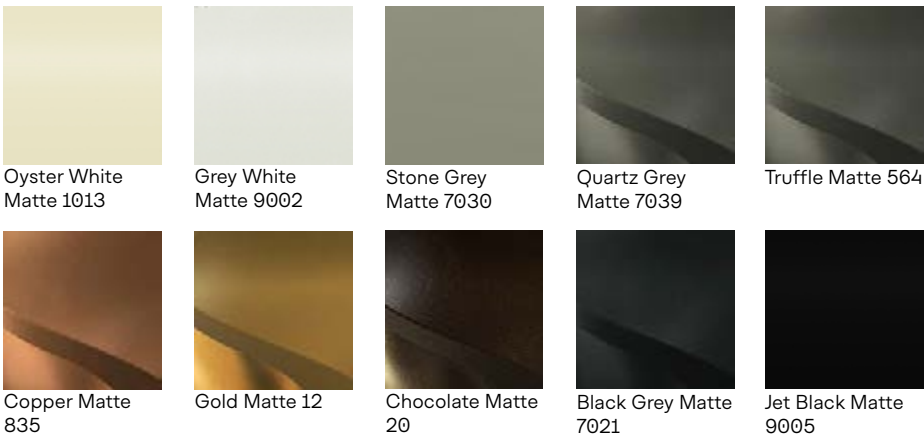
Brass



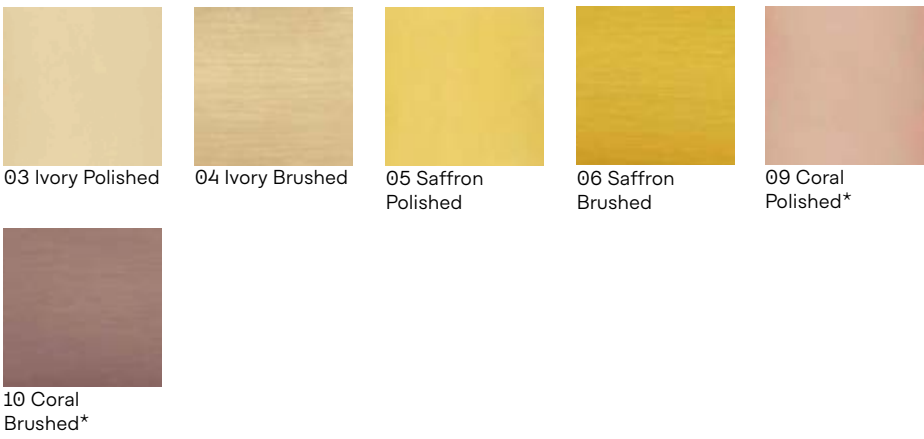
Antique Brass

Brushed horizontal to material's lenght.
Brass finish is **not suitable for all products.**

Powder Coated Matte

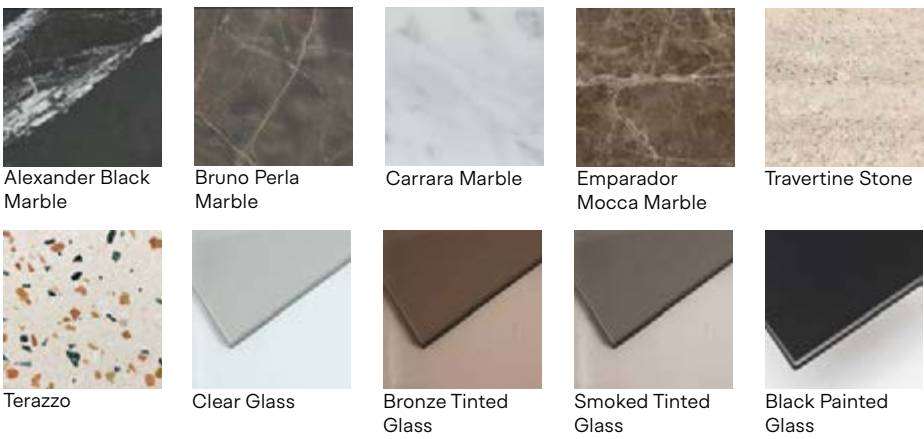


Coloured Steel



Brushed vertical to material's diameter.
* This finish requires an additional 2 weeks for production.

Glass & Stone



Outdoor

Iroko



Natural*

* Direct exposure to sunlight will eventually affect Iroko's colour, **creating a darker shade in time.**

Powder Coated

Textured



Oyster White
Textured 1013



Grey White
Textured 9002



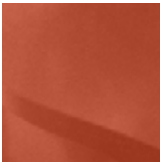
Pure White
Textured 9010



Grey Beige
Textured 1019



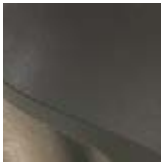
Peanut Textured
967



Salmon Orange
Textured 2012



Reed Green
Textured 6013



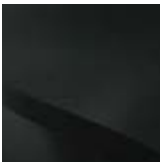
Earth Textured
39



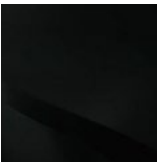
Stone Grey
Textured 7030



Umbra Grey
Textured 7022



Black Grey
Textured 7021



Jet Black
Textured 9005

*Parla recommends Powder Coated metal in **matte finish for indoor use** and aluminium or treated metal in **textured finish for outdoor use.**

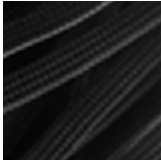
Rope



Flat Rope Tan



Flat Rope Khaki



Flat Rope Black



Woven Rope Tan



Woven Rope
Khaki



Woven Rope
Black



Grey White GR10



Lemon Verbena
K10



Vermilion TR17



Anthracite Grey
GR23

Guide for Care & Maintenance

Thank you for choosing Parla.
Our mission is to manufacture products that meet the highest standards in design, quality and functionality.

Regular professional care extends the life time of each product and thus also your satisfaction with its use. You can find some useful information on how to use and carefully maintain our products below.

SOLID WOOD INDOOR USE

The Solid wood we use is an actual living part of the tree it comes from, and is composed of wood fibers that are held together with adhesives. At Parla, our most popular choice of solid wood is Beech, and what we do is create pieces of lumber that have their own characteristics; unique in grain pattern, colour, and texture. As a result each piece of solid wood displays different behaviour and form when different carving techniques are used. Unlike wood veneer, solid wood pieces are frequently used for curved and multi-dimensional pieces.

ASH

With a neutral colorbase, ash trees are very durable and robust. Ash also has better resistance to sunlight and its possible corruptive effects.

BEECH

Having a light-pink undertone, beech wood is very easy to form, therefore easy to use for curved shapes and round corners requiring further surface processing. Parla Collection products are generally produced using Beech wood.

RECOMMENDATIONS

We recommend cleaning the surface regularly with a slightly damp soft cloth. Do not use heavy chemicals for cleaning purposes and protect the surface from sharp objects to avoid scratching. *As wood is a living material, variations in colour, pattern, and pigmentation will occur on each piece.

*Wooden furniture will also change appearance over time as it is affected by

the environment (daylight, humidity, etc.) in which it is placed.

*Solid wood furniture should not be placed too close to heat sources nor should it be in frequent contact with liquids.

*Do not use abrasive materials.

WOOD VENEER INDOOR USE

A veneer refers to a thin layer of wood peeled or cut from a section of a tree. It is then bonded onto a thick piece of wood, typically MDF, chipboard, or plywood. These layers are classified later according to their cutting technique and final patterns. At Parla, we use quarter cut veneer sheets with slip matching on plywood as standard. Each veneer table layer is unique. No matter how expertly cut or treated, none of its layers are identical to another, which is the charm of using natural materials. Veneer provides high-quality looks without the need for large amounts of wood consumption.

OAK

A somewhat brittle material when processed, oak is very resistant to heavy weather conditions and harsh climates as a tree. Being a durable and robust form, oak pieces require expertise and unique production techniques.

WALNUT

A tree familiar with mild climates, the walnut tree has high fibers resulting in splendid and rich patterns on its layers. Easy to process, walnut has high aesthetic qualities however it requires suitable methods to bring out its beauty and strength.

RECOMMENDATIONS

We recommend cleaning the surface

regularly with a slightly damp soft cloth. Please wipe the veneer following the direction of the wood grain. Compared to solid wood, wood veneer is less resistant to heat and moisture, especially around the edges where layers of wood are visibly pressed. Extreme heat and any contact to water must be avoided, especially around the edges.

*Veneers generally have color differences compared to their matching solid wood stain options. Which are usually used for chair legs or supportive elements. We, therefore, especially recommend using wood veneer material for stained table tops and legs.

*Do not use oil or ammonia-based products to clean wood veneer.

*Do not use abrasive materials.

METAL INDOOR USE

Metal, brass, aluminium, and stainless steel are the most preferred materials at Parla for the metal components of furniture we produce. Depending on the product type and place of use, metal surfaces are available in Powder Coated Textured (outdoor) or Matte (indoor) or PVD Coated; Polished or Brushed (indoor) finishes.

STAINLESS STEEL

Durable and more accessible, stainless steel is perfect for structural elements and metallic finishes. PVD coating can be used with different finishes, as shown in our coloured steel options.

METAL & ALUMINIUM

Parla recommends Powder Coated metal in matte finish for indoor use and aluminium or treated metal in textured finish for outdoor use. Aluminium is a rust-resistant and light material that can be used directly with powder coating without further treatments. However, we recommend using powder coated aluminium with a textured finish to increase the hold of coatings that protect the metal from heavy conditions of outdoor use. Metal materials on the other hand need to be pre-coated with cataphoresis treatment before coating for protection over rust and corrosion.

RECOMMENDATIONS

We recommend cleaning the surface with a damp cloth and wiping the surface immediately after.

- *Do not use alcohol.
- *Avoid using abrasive materials that can alter or scratch the surface.
- *For PVD coatings, Parla uses an environmentally friendly Anti Fingerprint solution. Creating a protective layer over stainless steel, this solution creates an easy-to-clean surface, reducing fingerprints.
- *it is not recommended to use PVD Coated steel under direct sunlight for extended periods since it can affect the coating colour over time.

GLASS & STONE

GLASS

Characteristic results of glass manufacturing such as tiny air bubbles, thickness variations and light pitting, should always be expected with glass. All glass used in our furniture is tempered to ensure excellent durability. For painted glass, all RAL colour options are available and the final finish is tempered extra clear glass with colour.

MARBLE & STONE

Travertine Stone and marble are natural and porous materials of sedimentary origin. They are usually collected as stone blocks which are later cut into layers of

stone using a delicate process. The texture of these stones depends on grains. The formed and pressured element groups to create mesmerising grains and layers makes each piece unique. The density of these element groups determines the colour and patterns of the stone.

Before using them as furniture parts stones are treated with an invisible solvent-based chemical to sustain their surface integrity. It penetrates stone pores and protects their surface against dirt, dust, water or stains, generating an easy clean effect. Due to its porous nature this treatment must be applied every few months to help the surface reach its entire service life.

RECOMMENDATIONS

We recommend carefully cleaning the surface with a barely damp soft cloth to avoid scratching the surface.

Marble is porous and has a poor resistance to acidic substances (vinegar, lemon juice, wine, tea, coffee, etc.) that even in small quantities can corrode the surface and penetrate into the pores forming mat spots.

- *Do not use any products containing acetone ammonia, chlorine, solvents, abrasive products and furniture polish, since these might permanently damage the surface of the product making it look opaque with marks.

Glass is not scratch-resistant so avoid dragging objects across the surface. Glass is very resistant to heat sources. Still we recommend never placing hot objects directly on the surface since high temperature differences create fragile spots on the surface which, could result in cracks.

- *Glass surfaces should be wiped with a clean dry cloth. Cleaning can be done with household ammonia or unique glass cleaning products if the occasion requires it.
- *Never use abrasives or sharp -edged tools to prevent scratching.

OUTDOOR

Outdoor furniture needs resistance to heavy weather conditions and direct sunlight. Our experience over time recommends specific types of materials for outdoor furniture, such as Iroko wood, woven ropes, and powder coated textured metal structures.

SOLID WOOD

OUTDOOR USE - IROKO

Iroko is a particular type of timber that grows in rainforest weather conditions, making it highly durable for outdoor use. With its high density of fibers, Iroko can extract minerals and particles from the soil. Because of these features, Iroko grows much faster than traditional timber types and can be produced in a fast-paced sustainable cycle. Iroko also showcases its stain colors distinctively due to its unique, light yellow based color.

METAL & ALUMINIUM

OUTDOOR USE

Since it is rust-proof, we use powder coated aluminium or pre-treated and powder coated metal structures for outdoor furniture. For outdoor use, we recommend powder coated metals with a textured finish, pre-coated with cataphoresis treatment to increase the paint's grip and protect the metal from heavy conditions of outdoor use. For aluminium, powder coating can be applied directly.

ROPES

The weaving technique and rope options create a vast playground for furniture designers. With round and flat options, hand woven ropes are carefully placed according to templates by professionals constructed by very skilled craftsmen. Woven from pre-UV treated strands, outdoor ropes also have a multi-layered internal structure, making them highly resistant to tension, colour fade and heavy weather conditions.

RECOMMENDATIONS

We recommend cleaning the Iroko surface regularly with a slightly damp soft cloth. *Do not use heavy chemicals for cleaning purposes and protect the surface from sharp objects to avoid scratching. *Although they can be in touch with it, outdoor furniture mustn't be in direct contact with salt water for long periods of time since it can cause corrosion. Also, direct exposure to sunlight for extended periods will eventually affect Iroko's colour. *Do not use any chemicals for cleaning powder coated metal, clean with damp cloths or water. *For extreme weather conditions, UV treatment types for outdoor ropes may vary. Please specify area of use to select the suitable treatment type.

UPHOLSTERY

GENUINE LEATHER

Natural leather has a pleasant characteristic smell and is wear resistant. Its quality depends on the animal's lifestyle as well as on the method of leather processing. Minor defects originating during the animal's life, such as wrinkles, blood veins, scars, scratches, etc. are regarded as permissible and are even required as evidence of the 'genuine and unique' quality of the leather.

RECOMMENDATIONS

The best maintenance for leather is regular vacuuming with a soft brush. Avoid using cleaning products and sharp objects. If cleaning is necessary use boiled water with natural soap shavings of good quality. Whip 2-3 tablespoons of soap flakes in 1-liter water and only use the foam. Apply the foam with a soft cloth, let the furniture dry and dry afterward the leather off thoroughly with a soft cotton cloth.

ARTIFICIAL LEATHER

Artificial leather is usually undemanding in maintenance.

RECOMMENDATIONS

Remove dust regularly with a fine suction force of your vacuum cleaner or with a wet cotton cloth.

- *Dry spilled liquids immediately by a dry cotton or paper towel.
- *Do not let other stains dry on the surface but remove them immediately with lukewarm water.
- *Wipe the surface carefully with a moistened cotton cloth and dry with a dry towel.

FABRIC

Cleaning and maintaining upholstered furniture regularly is important to retain the appearance of the fabric and to prolong its lifespan. Over time, dust and dirt can cause furnishing fabrics to change color and exacerbate wear.

RECOMMENDATIONS

Vacuum the furniture regularly using the upholstery nozzle to remove dust and avoid fluff and pilling. Straighten the fabric with your hands from time to time. Wrinkles in the fabric can be straightened using a steamer. Soak up spilled liquids immediately with an absorbent napkin or cloth by dabbing gently towards the centre of the stain. *Never use concentrated detergents or bleach, ammonia, optical brighteners or soap intended for hard surfaces. *We do not recommend spot cleaning of individual marks and stains as this damages the fabric and causes colour loss. *Avoid rubbing the material hard as this could result in loss of colour and damage the fabric.

We kindly ask you to follow instructions and recommendations contained in this manual.

Regular professional care extends the life of your product and besides can be also a condition for warranty compensations. The manufacturer does not take any responsibility for potential damage to the product resulting from unauthorised use and unprofessional handling of the furniture.

Parla is constantly working on further development of all products, which may cause some changes in used materials, constructions and finishing. As a result of this the recommendations and guidelines for the proper use of products may be also changed. Thank you for your understanding and we wish you pleasant moments spent while using our products.

**The products displayed in this catalogue are to be considered as sample configurations. The textures, colors of materials, and finishes are indicative due to variations that may result from the printing process.*

For any technical specifications and/or dimensions, please get in contact with our sales team. Parla Design reserves the right to change, without prior notice, materials, covers, finishes, and drawings presented in this catalogue.

parladesign.com



Istanbul Office / Showroom

Bareli İş Merkezi, Ayazmadere Cad.
Pazar Sok. No: 2-4
Beşiktaş 34349 - Istanbul, TURKEY
P +90 (212) 216 61 63 / 64

Istanbul Factory

Boğazköy Atatürk Mah.
Yıldırım Beyazıt Cad. No: 194
Arnavutköy 34285 - Istanbul, TURKEY
P +90 (212) 685 01 42
info@parladesign.com

London Office

4/4A Bloomsbury Square,
WC1A2RP - London, UK
P +44 (0) 20 3865 7703
london@parladesign.com

Dubai Office

Office No: 1509, Sobha Sapphire Bldg
P.O Box: 123377
Business Bay - Dubai, UAE
P +971 4 553 07 28
dubai@parladesign.com

US Office

3445 Rankin Street #3445
Dallas, TX 75205 - USA
P +1 214 577 6070
usa@parladesign.com

parladesign.com

THE IMPRINT

Creative Agency: Muhabbet
Art Direction: Gözde Ulusoy
Photography: Engin Yıldız, Burak
Teoman, Tahir Akkurt

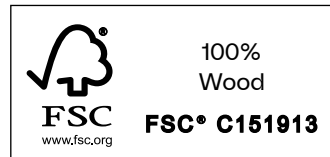
©2023 Parla

*All rights reserved. No part of this
publication may be reproduced, stored
in a retrieval system or transmitted in
any form or by any means, electronic,
mechanical, photocopying, recording or
otherwise; without the prior permission
of the copyright owner.*



CPD
PROVIDER

Ask for our FSC®-certified products



New York / London / Istanbul / Dubai

www.parladesign.com

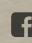

RESELLER

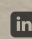
IDONA®

IDONA, spol. s r.o. Trenčianska cesta 31
957 01 Bánovce nad Bebravou, Slovakia

parla@idona.sk
+421 905 526 045

www.idona.sk

 @Idonaofficial  #idonaofficial

 linkedin.com/company/idonaofficial