

PARLA[®]

Materials

CONTENT

03	—	Fabrics
15	—	Finishes
16	—	<i>Solid Wood</i>
17	—	<i>Wood Veneer</i>
18	—	<i>Metal</i>
19	—	<i>Marble</i>
19	—	<i>Rope</i>
21	—	Furniture Care & Maintenance

LEGEND



Available for outdoor usage



Available for outdoor usage



Water temperature 30°C or 80°F



Water temperature 60°C or 140°F



Do not wash



Do not tumble dry



Tumble dry



Dry clean



Iron at low heat



Iron at medium heat



Wipe clean



FSC certified article
Ask for our FSC®-certified products

FABRICS

Due to technical reasons and differences in monitors, it is not possible to guarantee the same tone between deliveries, colours of materials may also appear different to those shown on the catalogue.

The right to update the fabrics seen in this catalogue belongs to the PARLA.



07 - Seagrass

Material	100% Polyester
Width	Approximately 57.48 inches (146 cm)
Weight	Approximately 317 g/m ²
Durability	85.000 Martindale
Pilling	Yarn1: 9 Yarn2: 19
Flammability	BS 5852
	CAL 117
	FMVSS 302
	NFPA 260
Colouring type:	Piece dyed
Type of print/dye	- disperse: Yes
Waterproof	Yes
After treatment	- brushed/emersed: Yes
	- other specification: T/C backing
Care Cleaning	    



23 - Cinnamon



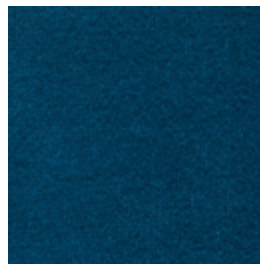
21 - Brick



17 - Vino



26 - Olive



27 - Spruce








30 - Marine



12 - Pinecone

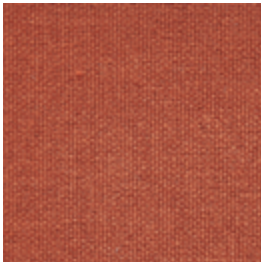


16 - Jute

Material	100% Polyester
Width	Approximately 57.5 inches (146 cm)
Weight	Approximately 327 g/m²
Durability	100.000 Martindale
Pilling	Yarn1: 93 Yarn2: 75
Flammability	BS 5852
	CAL 117
	FMVSS 302
	NFPA 260
Sustainability	Oeko-Tex
	ISO 14001
Colouring type	Piece dyed
Type of print/dye	- disperse: Yes
After treatment	- brushed/emersed: Yes
Wyzenbeek	(double rubs): 200.000
	cotton duck type heavy upholstery: Yes
Care Cleaning	    



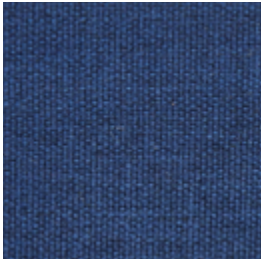
25 - Wisteria



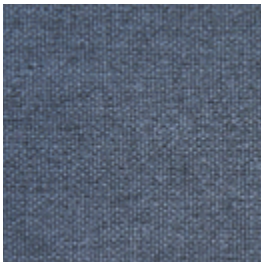
30 - Canyon



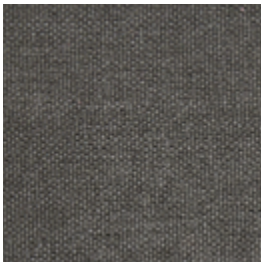
35 - Chive



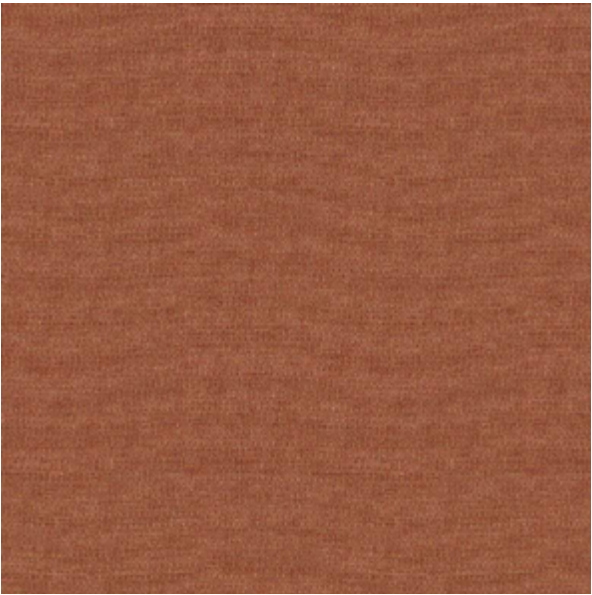
21 - Indigo



20 - Marine



04 - Shadow



ACT08



ACT07





ACT09



ACT12



ACT14

Material	75% Trevira® CS Flame Retardant Polyester, 25% Polyester (Non metallic dye stuffs)
Width	Approximately 55 inches (140 cm)
Weight	Approximately 325 g/m2 (455 g/lin.m ±5%)
Durability	≥50,000 Martindale cycles
Light fastness	5 (ISO 105 - B02)
Fastness to rubbing	Wet: 4, Dry: 4 (ISO 105 - X12)
Flammability	CRIB 5 EN 1021 - 1 (cigarette) EN 1021 - 2 (match) BS 7176 low hazard BS 5852 ignition source 5 (over CMHR 50kg/m3 foam) BS 7176 medium hazard (over CMHR 50kg/m3 foam) DIN 4102 B1 NF D 60-013 (over CMHR 50kg/m3 foam) ÖNORM B 3825 & A 3800-1 (over CMHR 58kg/m3 foam) UNI 9175 Classe 1 IM
Sustainability	Certified to OEKO-TEX® Standard 100
Care Cleaning	   



ACT17



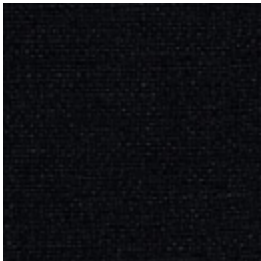
ACT15



ACT29



ACT30

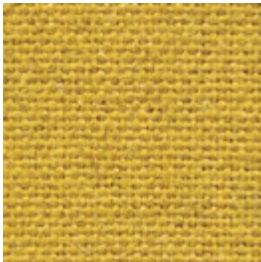


ACT31

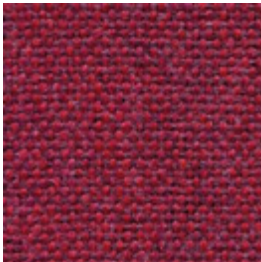


MLF20

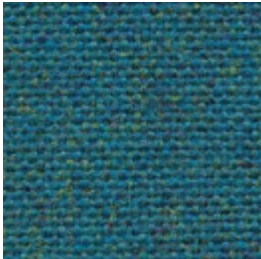
Material	70% Virgin Wool, 30% Flax
Width	Approximately 55 inches (140 cm)
Weight	Approximately 437 g/m2 (612 g/lin.m ±5%)
Durability	≥50,000 Martindale cycles
Light fastness	5 (ISO 105 - B02)
Fastness to rubbing	Wet: 3, Dry: 4 (ISO 105 - X12)
Flammability	BS 5852 ignition source 5 (CRIB 5) EN 1021-1&2 cigarette & match BS 7176 low hazard BS 7176 medium hazard NF D 60-013 ÖNORM B 3825 & A 3800-1 (58kg/m3 CMHR Foam) UNI 9175 Classe 1 IM BS 5867-2: Type B curtains & drapes
Sustainability	Certified to the EU Ecolabel Certified to Indoor Advantage™ "Gold" Rapidly renewable and compostable Made from wool and bast fibre
Care Cleaning	



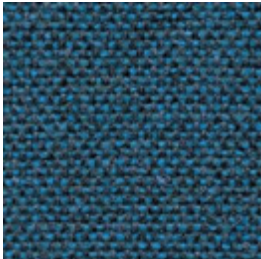
MLF17



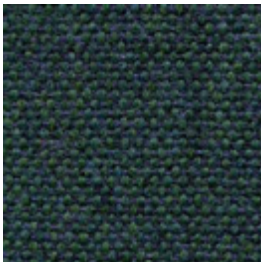
MLF14



MLF37



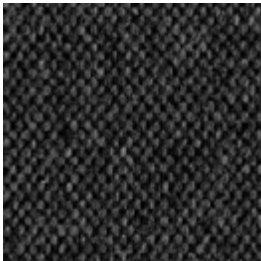
MLF35



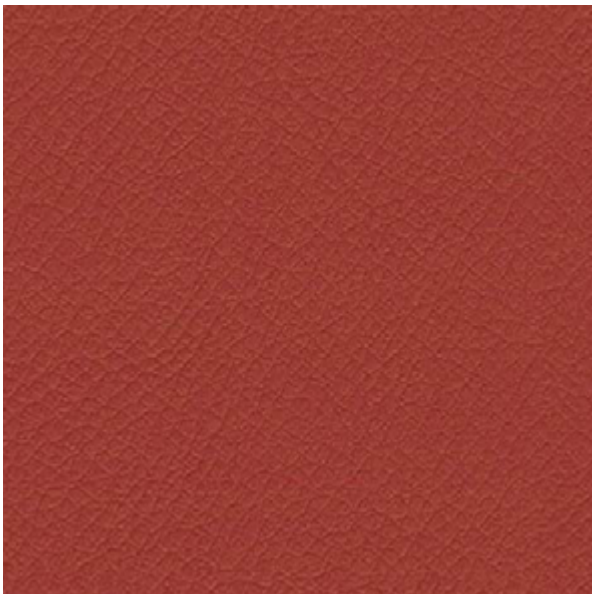
MLF32





MLF26



MLF16

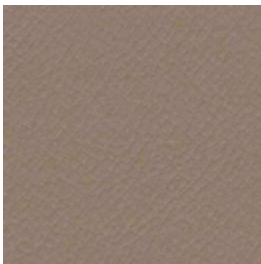


ITA11

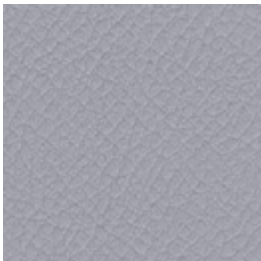
Material	Surface: 98% PVC, 2%. PU Substrate: 100% Cotton
Width	Approximately 55 inches (140 cm)
Weight	Approximately 1190 g/lin.m ±10%
Durability	ISO 5470-2 100,000 rubs (Grade 2 min.)
Light fastness	6 (ISO 105 - B02)
Fastness to rubbing	Wet: 4, Dry: 4 (ISO 105 - X12)
Flammability	EN 1021-1 (cigarette) EN 1021-2 (match) BS 7176 low hazard BS 5852 ignition source 5 (CRIB 5) BS 7176 medium hazard BS 5852 ignition source 7 (with interliner) UNI 9175 Classe 1 IM
Flexes	ISO 7854 Method B 400,000 Flexing cycles
Waterproof	Hydrostatic head BS 3424 Part 26 > 1 mt
Bleach cleanable	ISO 105 E03 colour change 4 for 10% chlorine solution
Urea resistance	BS 3424 Part 19 no significant deterioration after 24 hrs
Anti-microbial / Anti-fungal	AATCC 147
Phthalate free	EN 15777
Residual extension	ISO 14704-1 Method A < 3% After 30 minutes
Care Cleaning	 



ITA03



ITA02



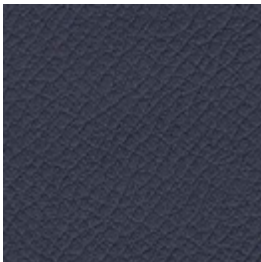
ITA01



ITA14



ITA15



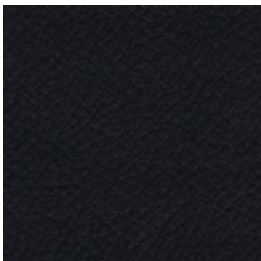
ITA07



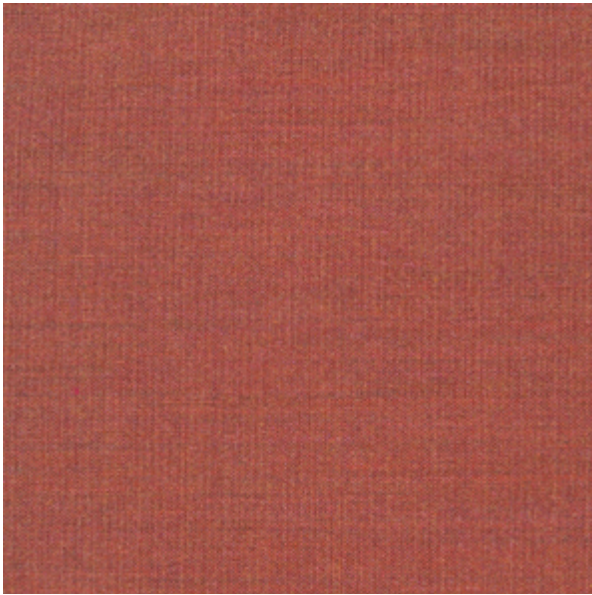
ITA18



ITA22



ITA12



653

Material	90% New wool (worsted), 10% Nylon
Width	Approximately 55 inches (140 cm)
Weight	Approximately 420 g/lin.m
Durability	≥100,000 Martindale cycles (EN ISO 12947)
Pilling	4 (EN ISO 12945)
Light fastness	5-7 (ISO 105 - B02)
Fastness to rubbing	Wet: 4-5, Dry: 4-5 (ISO 105 - X12)
Flammability	BS 5852 Crib 5 with treatment ** AS/NZS 1530.3 AS/NZS 3837 class 2 BS 5852 ignition source 3 BS 5852 part 1 EN 1021-1/2 GB 50222 B1 with treatment IMO FTP Code 2010:Part 7 with treatment IMO FTP Code 2010:Part 8 NF D 60 013 NFPA 260 SN 198 898 5.3 with treatment UNI 9175 1IM US Cal. Bull. 117-2013 ÖNORM B1/Q1
Sustainability	Complies with EU ecolabel "The Flower"
Absorption	0.55/Class D (flat), 0.80/Class B (waved) EN ISO 354
Airflow	445 Pa s/m EN 29053
Care Cleaning	

* To pass this test flame retardant treatment is necessary.
Kvadrat is looking into more environmental friendly alternatives but for now the external finisher may use a treatment containing halogen based flame retardants.

** Price will change according to the crib 5 application. Production time will be extended.



422



452



662



373



692



873



933



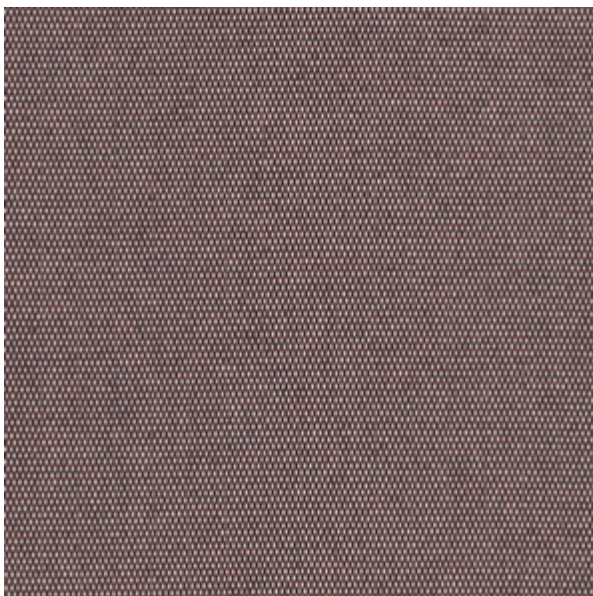
982



123

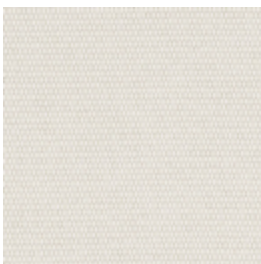


163



370

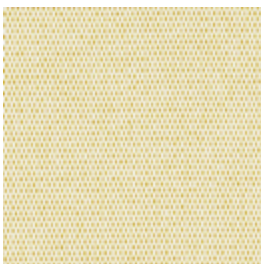
Material	100% Trevira CS
Width	Approximately 55 inches (140 cm)
Weight	Approximately 560 g/lin.m
Durability	≥50,000 Martindale cycles (EN ISO 12947)
Pilling	4-5 (EN ISO 12945)
Light fastness	5 (ISO 105 - B02)
Fastness to rubbing	Wet: 4-5, Dry: 4-5 (ISO 105-X12)
Colour fastness...	
... to light	7 (ISO 105-B02)
... to weathering	6-7 (ISO 105-B04)
... to chlorine water	4-5 (ISO 105-E03)
... to sea water	4-5 (ISO 105-E02)
Flammability	BS 5852 ignition source 5 (CRIB 5)
	BS 5852 part 1 ignition source 0
	DIN 4102 B1
	EN 1021-1/2
	IMO FTP Code 2010 Part 8
	NF D 60 013
	NF P 92 507 M1
	UNI 9175 1IM
	US Cal. Bull. 117-2013
	ÖNORM B1/Q1
Sustainability	Fluorocarbon-free water repellent finish
Spray test (water)	3 (EN 4920)
Soil repellent	min. 4, depending on colour
Care Cleaning	    



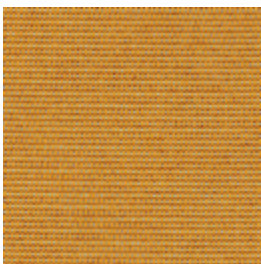
210



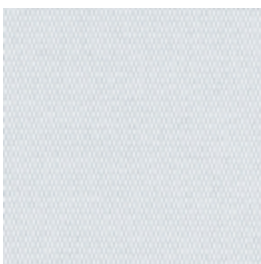
340



410



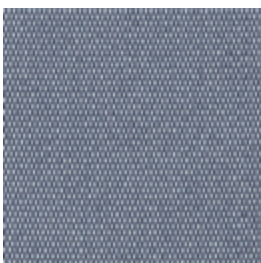
450



110



150



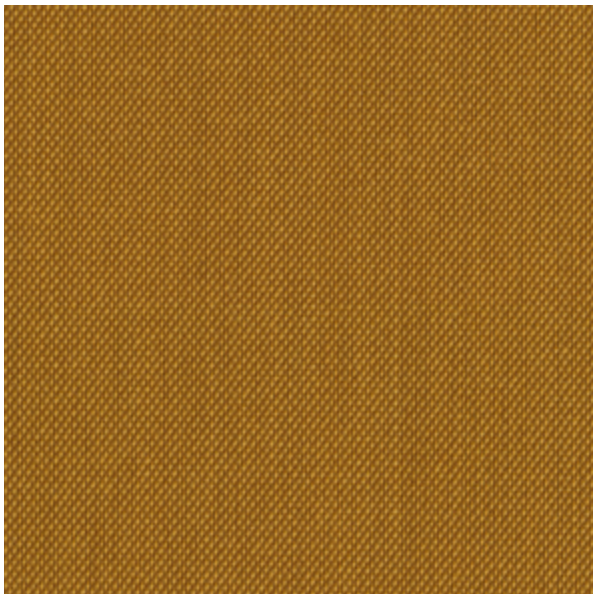
170



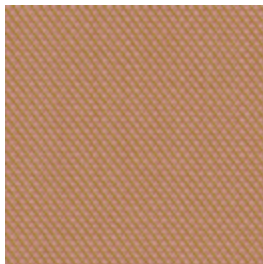
750



780



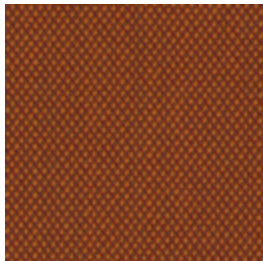
453



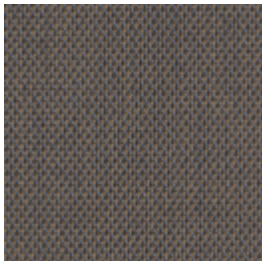
506



533

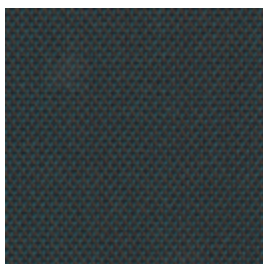


576

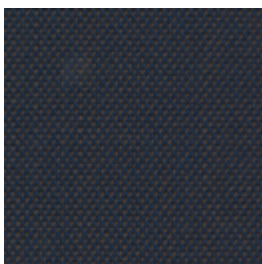


253

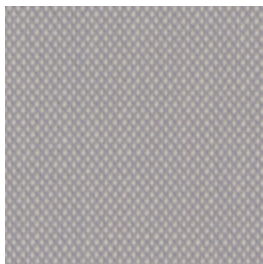
Material	90% New wool (worsted), 10% Nylon
Width	Approximately 55 inches (140 cm)
Weight	Approximately 770 g/lin.m
Durability	≥100,000 Martindale cycles EN ISO 12947
Pilling	4 (EN ISO 12945)
Light fastness	5 (ISO 105 - B02)
Fastness to rubbing	Wet: 4-5, Dry: 4-5 (ISO 105 - X12)
Flammability	BS 5852 Crib 5 with treatment ** AS/NZS 1530.3 AS/NZS 3837 class 2 BS 5852 ignition source 3 BS 5852 part 1 EN 1021-1/2 GB 50222 B1 with treatment IMO FTP Code 2010:Part 8 NF D 60 013 NFPA 260 SN 198 898 5.3 with treatment UNI 9175 1IM US Cal. Bull. 117-2013 ÖNORM B1/Q1
Sustainability	Complies with EU ecolabel "The Flower"
Absorption	0.70/Class C (flat), 0.95/Class A (waved) EN ISO 354
Airflow	910 Pa s/m EN 29053
Care Cleaning	



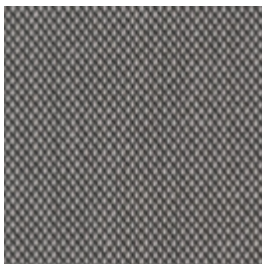
996



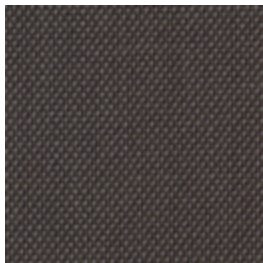
756



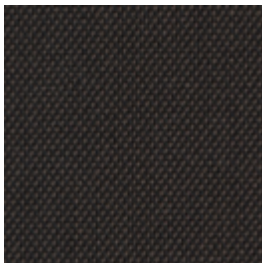
105



133



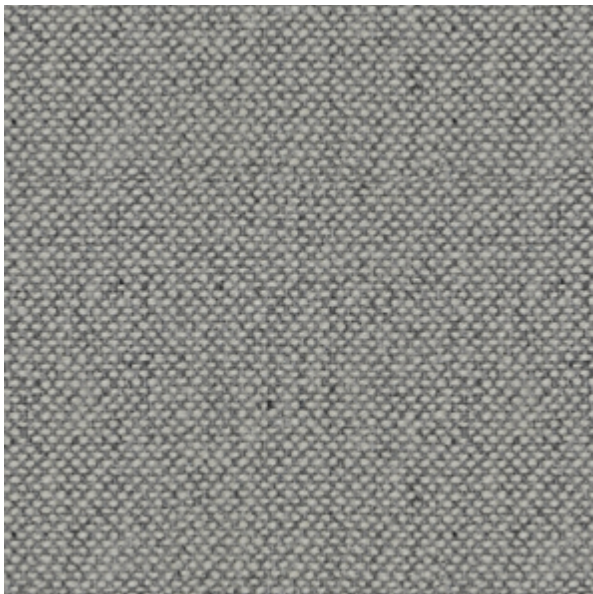
176



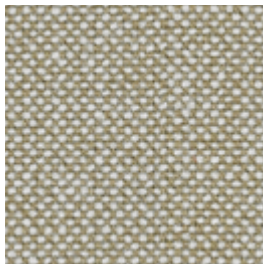
383

* To pass this test flame retardant treatment is necessary.
Kvadrat is looking into more environmental friendly alternatives but for now the external finisher may use a treatment containing halogen based flame retardants.

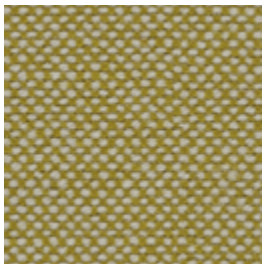
** Price will change according to the crib 5 application. Production time will be extended.



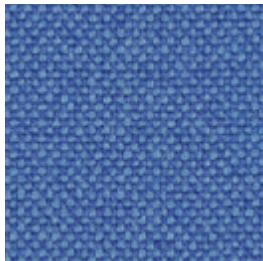
116



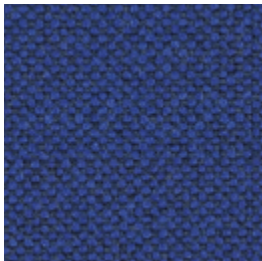
220



407

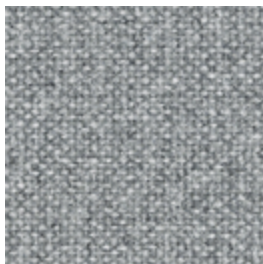


733

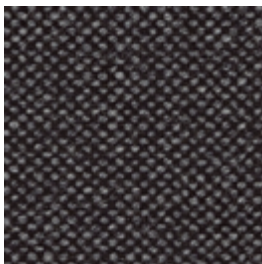


754

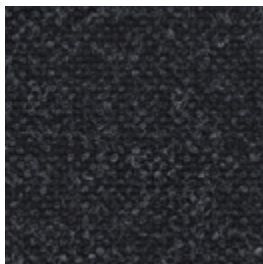
Material	70% New wool, 30% Viscose
Width	Approximately 51 inches (130 cm)
Weight	Approximately 795 g/lin.m
Durability	≥100,000 Martindale cycles EN ISO 12947
Pilling	3-4 (EN ISO 12945)
Light fastness	5-7 (ISO 105 - B02)
Fastness to rubbing	Wet: 3-5, Dry: 4-5 (ISO 105 - X12)
Flammability	BS 5852 CRIB 5
	AS/NZS 1530.3
	AS/NZS 3837 class 2
	BS 5852 ignition source 3
	BS 5852 Part 1
	EN 1021-1/2
	GB 50222 B1 with treatment *
	IMO FTP Code 2010:Part 8
	NF D 60 013
	NFPA 260
	SN 198 898 5.3 with treatment *
	UNI 9175 1IM
	US Cal. Bull. 117-2013
	ÖNORM B1/Q1
Sustainability	Complies with EU ecolabel "The Flower"
Absorption	0.45/Class D (flat), 0.70/Class C (waved)
	EN ISO 354
Airflow	182 Pa s/m EN 29053
Care Cleaning	



130



368



180

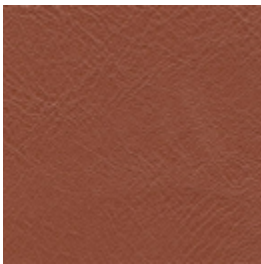
* To pass this test flame retardant treatment is necessary.
Kvadrat is looking into more environmental friendly alternatives but for now the external finisher may use a treatment containing halogen based flame retardants.



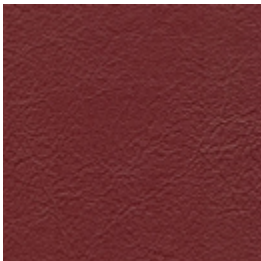
5458



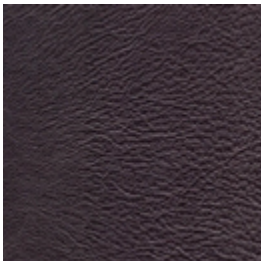
3396



665



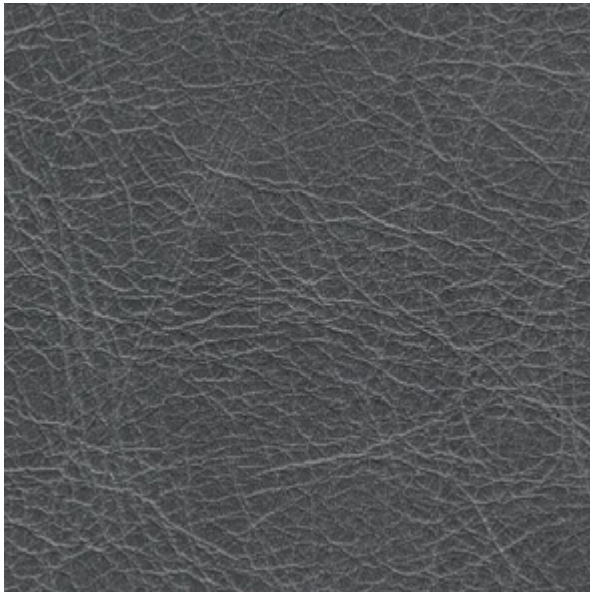
5484



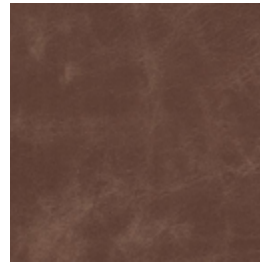
Black

Material	Bovine leather
Thicknes	Approximately 0,9 mm
Average size	4,20 m2
Colour fastness to rubbing	IUF 450 / UNI EN ISO 11640 - 500 dry rubs (Grade 4 min.) IUF 450 / UNI EN ISO 11640 - 150 wet rubs (Grade 4 min.) IUF 450 / UNI EN ISO 11640 - 80 alkaline ph8 (Grade 4 min.)
Light resistance	5 blue scale - IUF 402 UNI EN ISO 105-B02
Flammability	CRIB 5 ** UNI EN ISO 1021-1/2 BS 5852 1990 Sec. 4 NI/0-1 California T.B. 117
Flexes	IUP 20 / UNI EN ISO 5402 (Grade 30.000 minimum)
Adhesion	IUF 470 / UNI EN ISO 11644 (Grade 3,50 N/cm min.)
Tear strenght	IUF 40 / UNI EN ISO 3377-1 (Grade 20 N min.)

** Price will change according to the crib 5 application. Production time will be extended.



16196



16142

Material	Bovine leather
Thicknes	Approximately 0,9 mm
Average size	4,50 m2
Colour fastness to rubbing	IUF 450 / UNI EN ISO 11640 - 500 dry rubs (Grade 4 min.) IUF 450 / UNI EN ISO 11640 - 100 wet rubs (Grade 4 min.) IUF 450 / UNI EN ISO 11640 - 50 alkaline ph8 (Grade 4 min.)
Light resistance	5 blue scale - IUF 402 UNI EN ISO 105-B02
Flammability	CRIB 5 ** UNI EN ISO 1021-1/2 BS 5852 1990 Sec. 4 NI/0-1 California T.B. 117
Flexes	IUP 20 / UNI EN ISO 5402 (Grade 30.000 minimum)
Adhesion	IUF 470 / UNI EN ISO 11644 (Grade 3,50 N/cm min.)
Tear strenght	IUF 40 / UNI EN ISO 3377-1 (Grade 20 N min.)

** Price will change according to the crib 5 application. Production time will be extended.

FINISHES

Due to technical reasons and differences in monitors, it is not possible to guarantee the same tone between deliveries, colours of materials may also appear different to those shown on the catalogue.

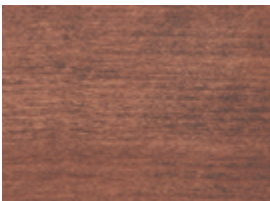
SOLID WOOD / BEECH



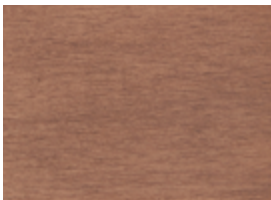
Beech - Natural



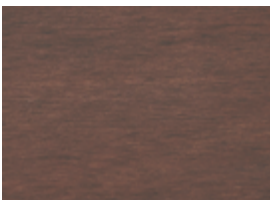
Beech - Light Brown



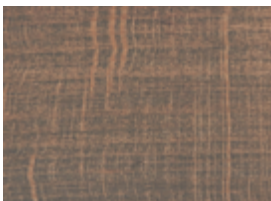
Beech - Brown



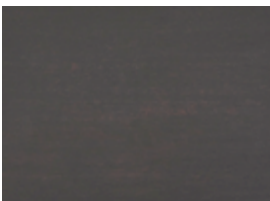
Beech - Light Walnut



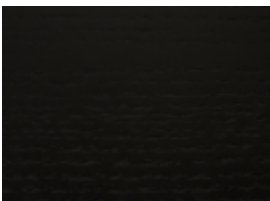
Beech - Dark Walnut



Beech - Mocha



Beech - Wenge



Beech - Black

SOLID WOOD / ASH



Ash - Natural



Ask for our FSC®-certified products



Iroko - Natural

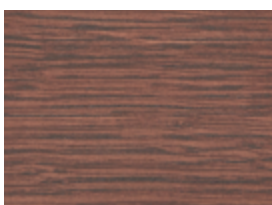
WOOD VENEER / OAK



Oak - Natural



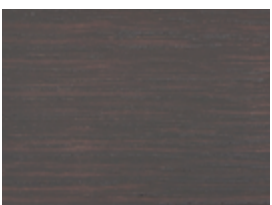
Oak - Light Brown



Oak - Brown



Oak - Mocha



Oak - Wenge

WOOD VENEER / AMERICAN WALNUT



American Walnut - Natural



Ask for our FSC®-certified products

METAL / POWDER COATING



Black Matte



Black Textured



Gold



Copper

METAL / STAINLESS STEEL & COLOURED STEEL



01 - Stainless Steel - Polished



02 - Stainless Steel - Brushed



03 - Ivory - Polished



04 - Ivory - Brushed



05 - Saffron - Polished



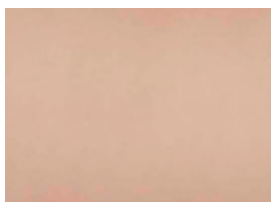
06 - Saffron - Brushed



07 - Rust - Polished **



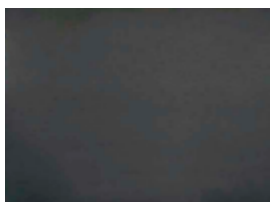
08 - Rust - Brushed **



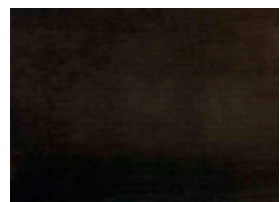
09 - Coral - Polished *



10 - Coral - Brushed *



11 - Graphite - Polished *



12 - Graphite - Brushed *

* This finish requires an additional 1 week for production.

** This finish requires minimum order quantity and additional 1 week for production.

METAL / BRASS



Antique Brass

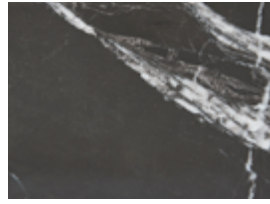
MARBLE



Carrara



Bruno Perla

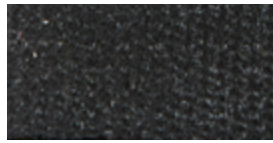


Alexander Black

ROPE



Tan



Black



FURNITURE CARE & MAINTANENCE

Important Notice

Solid Wood - Indoor

Solid Wood - Outdoor

Wood Veneer

Metal Plating

Marble

Glass

Glides

Natural Wicker

Fabric

Genuine Leather

Artificial Leather

We recommend to check and tighten periodically all screws and bolts which are used to connect individual parts. This will result in increased overall strength and durability of the product. Bigger clearance in the joints can cause excessive strain on parts and cause damage to the product. We recommend to check on the condition of glides from time to time to avoid a damage of the floor or the product. Slight ripples and wrinkles can appear on upholstered products during the upholstery process or during the use of the product. These ripples or wrinkles can be determined by the characteristic of upholstery materials or technology of the upholstery and therefore cannot be subject to any claim. We kindly ask you to follow instructions and recommendations contained in this manual. Regular professional care extends the life of your product and besides can be also a condition for warranty compensations. The manufacturer does not take any responsibility for potential damage to the product resulting from unauthorised use and unprofessional handling of the furniture. PARLA company is constantly working on the further development of all products, which may cause some changes in used materials, constructions and finishing. As a result of this the recommendations and guidelines for the proper use of products may be also changed. Thank you for your understanding and we wish you pleasant moments spent while using our products.

Solid Wood - Indoor

Solid wood is wood that has been cut from a tree, which is composed of wood fibers that are held together with adhesives, solid wood contains wood fibers throughout the piece of lumber. Each type of solid wood has its own characteristics, including its grain pattern, color and texture.

MAINTENANCE

We recommend that you regularly clean the surface with soft cloth and specific products for wood. Do not use abrasive material.

WARNING

*As wood is a natural material, variations in color and pigmentation will occur on each piece.

*Wooden furniture will also change appearance over time as it is affected by the environment (daylight, humidity, etc.) in which it is placed.

*Solid wood furniture should therefore not be placed too close to heat sources.

Solid Wood - Outdoor

Iroko is a special timber which has very durable outdoor usage.

MAINTENANCE

We recommend special treatment carried out every six months, preferably in spring and autumn, to help the Iroko reach its full service life.

WARNING

Exposure to the sun and rain will eventually change Iroko's colour.

Wood Veneer

A veneer refers to a thin layer of wood which is cut from the circumference of a tree. It is then bonded onto a dense piece of wood, which is typically MDF, chipboard or plywood. No veneer table leaf, no matter how expertly cut or treated, is identical to another which is a charm of natural product. Veneer provides high-quality looks, but without the need for large amounts of expensive wood.

MAINTENANCE

We recommend that you regularly clean the surface with barely damp soft cloth to wipe the veneer following the direction of the wood grain. Don't use oil or ammonia-based products to clean wood veneer.

WARNING

*Veneers are generally different colour than solid wood which is used for the tables legs. We therefore recommend stained table tops, and legs.

Metal Plating

PARLA most frequently uses metal, brass, aluminium and stainless steel for metal components. Depending on the product, metal surfaces are either Powder-coated, PVD-coated, polished, satine. A matte or textured powder coating finish provides colour and surface protection.

MAINTENANCE

We recommend that you clean the surface with wet soft cloth and dry immediately. Do not use alcohol. Avoid to use abrasive materials that can alter or scratch the surface.

We recommend you to use Bio circle E-NOX Shine or similar products that help wiping away dirt or fingerprints on PVD coated surface.

WARNING

PVD coating may have slight tint variations from batch to batch.

Different types of Stainless steels (pipe profile, sheet metal ..etc) and different thicknesses may cause tint variations on PVD coating.

Marble

Marble is a natural material, of sedimentary origin and is formed mainly by calcium carbonate (CaCO₃). Texture of marble depends on the form, size and uniformity of grains. The element components of marble determine the color of the stone. Marble features veining with contrasting colors that run throughout each piece giving it a distinctive look.

MAINTENANCE

We recommend that you regularly clean the surface with barely damp soft cloth. Pay the maximum care while making these operations to avoid scratching the surface. We recommend solvent based special treatment carried out every months, to help the surface reach its full service life. Solvent based stain protector creates an invisible barrier on the applied area. It penetrates in depth and protects against dirt, dust, water stains. It generates easy clean effect.

WARNING

*Marble is porous and has a poor resistance to acidic substances (vinegar, lemon juice, wine, tea, coffee, etc.) that even in small quantities can corrode the surface and penetrate into the pores forming mat spots.

*Do not use any products containing acetone, ammonia, chlorine, or solvents, abrasive products and furniture polish, since these might permanently damage the surface of the product, making it look opaque, with marks.

Glass

Glass manufacture characteristics such as small air bubbles, surface waviness and light pitting are to be expected. All glass used in our furniture is tempered to ensure greater durability.

MAINTENANCE

Glass tops should be wiped with a clean, dry cloth. Clean with household ammonia as the occasion requires. Never use abrasives or sharp-edged tools.

WARNING

Glass is not scratch – resistant, so avoid dragging objects across the surface. Glass is very heat-resistant, but we recommend that you never place hot objects directly on the surface.

Glides

Glides protect the product material as well as the floor against damage, which can reduce noise and help to make moving the chair on the floor easier, especially on carpets. Specify the required type of glides to suit your floor in your order.

If you are not sure which type of glides to choose, request an opinion from your floor covering supplier. We supply plastic (standard) and felt glides (optional).

MAINTENANCE

Glass tops should be wiped with a clean, dry cloth. Clean with household ammonia as the occasion requires. Never use abrasives or sharp-edged tools.

WARNING

Glass is not scratch – resistant, so avoid dragging objects across the surface. Glass is very heat-resistant, but we recommend that you never place hot objects directly on the surface.

Natural Wicker

Wicker is a natural material, variations on texture and weaving may occur. Since it is a natural material it might dry out and crack over time.

MAINTENANCE

We recommend that you regularly take dust with a soft cloth or a soft brush. Avoid damaging surface.

WARNING

*Natural wicker is perfectly fine for indoor use but it's not suitable for the outdoors.

*Natural wicker is susceptible to rain, sleet, snow, moisture, and other forms of inclement weather.

*Sun bakes the fibres leaving them dry and brittle, moisture can loosen joints and warp frames.

Fabric

Cleaning and maintaining upholstered furniture regularly is important to retain the appearance of the fabric and to prolong its lifespan. Over time, dust and dirt can cause furnishing fabrics to change color and exacerbate wear.

MAINTENANCE

Vacuum the furniture regularly using the upholstery nozzle to remove dust and avoid fluff and pilling. Straighten the fabric with your hands from time to time. Wrinkles in the fabric can be straightened using a steamer. Soak up spilled liquids immediately with an absorbent napkin or cloth by dabbing gently towards the centre of the stain. Never use concentrated detergents or bleach, ammonia, optical brighteners or soap intended for hard surfaces. We do not recommend spot cleaning of individual marks and stains as this damages the fabric and causes colour loss. On wool fabrics, most stains can be removed with lukewarm water on a clean lint-free cloth. If necessary, add a little neutral detergent. Avoid rubbing the material hard as this could result in loss of colour and damage the fabric.

Genuine Leather

Natural leather has a pleasant characteristic smell and is wear resistant. Its quality depends on the animal's lifestyle as well as on the method of leather processing. Minor defects originating during the animal's life, such as wrinkles, blood veins, scars, scratches, etc. are regarded as permissible and are even required as evidence of the 'genuine and unique' quality of the leather.

MAINTENANCE

The best maintenance for leather is regular vacuuming with a soft brush. Avoid using cleaning products and sharp objects. If cleaning is necessary use boiled water with natural soap shavings of good quality.

Whip 2-3 tablespoons of soap flakes in 1-liter water and only use the foam. Apply the foam with a soft cloth, let the furniture dry and dry afterward the leather off thoroughly with a soft cotton cloth.

Artificial Leather

Artificial leather is usually undemanding in maintenance.

MAINTENANCE

Remove dust regularly with a fine suction force of your vacuum cleaner or with a wet cotton cloth. Dry spilled liquids immediately by a dry cotton or paper towel. Do not let other stains dry on the surface but remove them from the surface immediately with lukewarm water. Wipe the surface carefully with a moistened cotton cloth and dry with a dry towel.



**The products displayed in this catalogue are to be considered as sample configurations.*

The textures, colors of materials, and finishes are indicative due to variations that may result from the printing process. For any technical specifications and/or dimensions, please get in contact with our sales team. Parla Design reserves the right to change, without prior notice, materials, covers, finishes, and drawings presented in this catalogue.

PARLA[®]

ISTANBUL SHOWROOM

Bareli İş Mezi Ayazmadere Cad.
Pazar Sok. No:2-4
Beşiktaş 34349 İstanbul/Turkey

FACTORY

Boğazköy Atatürk Mah.
Yıldırım Beyazıt Cad. No:194
Arnavutköy 34285 İstanbul/Turkey

DUBAI SHOWROOM

Office No: 1509, Sobha Sapphire Bldg
P.O Box: 123377
Business Bay - Dubai / UAE

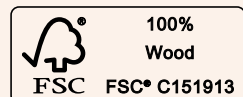
LONDON

4/4A Bloomsbury Square,
WC1A 2RP
London / United Kingdom

© 2020 Parla Design

All rights reserved. No part of this publication may be reproduced, stored in a retrieval system or transmitted in any form or by any means, electronical, mechanical, photocopying, recording or otherwise, without the prior written permission of the copyright owner.

Ask for our FSC®-certified products




RESELLER


IDONA®


IDONA, spol. s r.o. Trenčianska cesta 31
957 01 Bánovce nad Bebravou, Slovakia

parla@idona.sk
+421 905 526 045

www.idona.sk

 @Idonaofficial

 #idonaofficial

 linkedin.com/company/idonaofficial